

KENTUCKY DEPARTMENT OF HIGHWAYS

PRESTON STREET OVER NORTH DITCH

JEFFERSON COUNTY

| | | | | |
|-----------|------|----|---------|------|
| NO. SHEET | DATE | BY | CHECKED | DATE |
| 7 | | | | |

1-17 Design Plans
18-28 Shop Plans

| ITEM | SHEET NO. | REFERENCES AND ESTIMATE OF QUANTITIES | | | | | | | | | | |
|-----------------------------|---------------|---------------------------------------|---------------|------------------|------------------|--------------------|---------------------------|---------------------------------|-----------------------------|------------|------------|--|
| | | CONCRETE CLASS "A" | REINFORCEMENT | STRUCTURAL STEEL | SHEAR CONNECTORS | PROTECTIVE COATING | METAL HANDRAIL | | REMOVING EXISTING STRUCTURE | EXCAVATION | | |
| | | | | | | | ALT. "A" ALUM. L.I.P. FT. | ALT. "B" GALV. STEEL L.I.P. FT. | | COMMON | SOLID ROCK | |
| Title Sheet | 1 | | | | | | | | | | | |
| Layout | 2 | | | | | | | | | | | |
| General Note | 3 | | | | | | | | | | | |
| SUBSTRUCTURE QUANTITIES | | | | | | | | | | | | |
| Abutment No. 1 | 4-5-6 | 171.1 | 19,650 | | | | | | 775 | 75 | | |
| Abutment No. 2 | 7-8-9 | 150.8 | 18,736 | | | | | | 630 | 75 | | |
| Soundings | 10 | | | | | | | | | | | |
| Armored Edges | AEI & Sht. 18 | | | | | | | | | | | |
| SUBSTRUCTURE TOTAL | | 321.9 | 37,786 | | | | | ③ | 1,405 | 150 | | |
| SUPERSTRUCTURE QUANTITIES | | | | | | | | | | | | |
| Span-Steel Details | 11-12 | 154.2 | 36,904 | | | | | | | | | |
| Construction Elevations | 13 | | | | | | | | | | | |
| Span-Steel Details | 14-15-16-17 | | | | | | | | | | | |
| Shear Connector Details | 15 | | | | | | | | | | | |
| Shoes and Rockers | 16 | | | | | | | | | | | |
| Expansion Dam | 17 | | | | | | | | | | | |
| Armored Edge | 18 | | | | | | | | | | | |
| Metal Handrail | H112 or H113 | | | | | | | | | | | |
| Prepn. Cork Exp. Jt. Mat. | | | | | | | | | | | | |
| Polyvinyl Waterstop | G352 | | | | | | | | | | | |
| SUPERSTRUCTURE TOTAL | | 154.2 | 36,904 | ① | ② | 730 | 161 | 161 | | | | |
| TOTAL FOR BRIDGE | | 476.1 | 74,690 | ① One | ② One | 730 | 161 | 161 | ③ COMP | 1,405 | 150 | |
| BILL OF INCIDENTAL MATERIAL | | | | | | | | | | | | |
| ITEM | NO. | SIZE AND DESCRIPTION | | | | | | | | | | |
| Prepn. Cork Exp. Jt. Mat. | 1 | 17'-2"x1"x83'-2" | | | | | | | | | | |
| Polyvinyl Waterstop | 2 | 1"x5/8"x1'-10" | | | | | | | | | | |
| Preformed Joint Sealer | 1 | 81'-00" Long - See Std. Dwg. G352 | | | | | | | | | | |

- ① Approximate weight of structural steel 256,260 lbs.
- ② Shear connectors approximate weight
Option 1- 4" Channels @5.64 5,187 lbs.
Option 2- 3/4" x 4" Studs 2,657 lbs.
Option 3- 3/4" x 4" mean diameter bar spiral 3,682 lbs.
- ③ Removing existing structure, see General Note, Sheet 3

REFERENCES

- ANSI-6
- G352
- G353
- AE-1
- H112
- H113

(THE SPECIAL PROVISION FOR "LINSEED OIL PROTECTIVE COATING" APPROVED 4-14-64)
(THE SPECIAL PROVISION FOR "JOINT SEALER COMPOUND" APPROVED 4-27-62)
(THE SPECIAL PROVISION FOR "PREFORMED JOINT SEALER" APPROVED 2-11-64)

BRIDGE OVER NORTH DITCH SHEET 7 OF 17

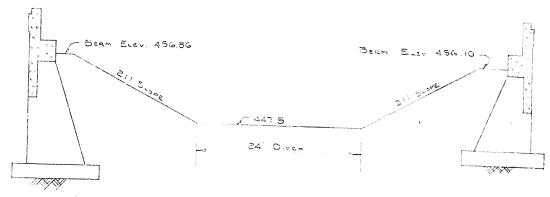
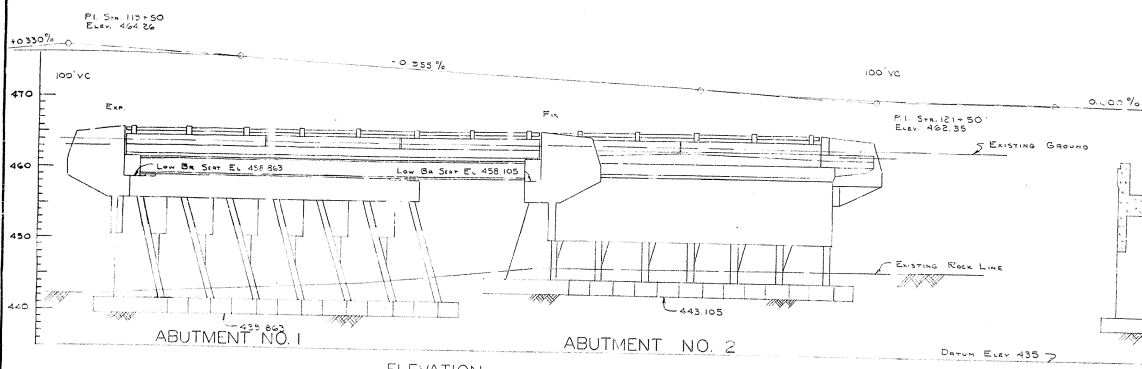
COMMONWEALTH OF KENTUCKY
DEPARTMENT OF HIGHWAYS
FRANKFORT
COUNTY OF
JEFFERSON
PRESTON STREET

ROAD
STATION 120+50.926 PROJECT NO.

| | | |
|---------------|-----------|-------|
| BRIDGE NUMBER | DESIGNED | DRAWN |
| | NO. 16050 | |

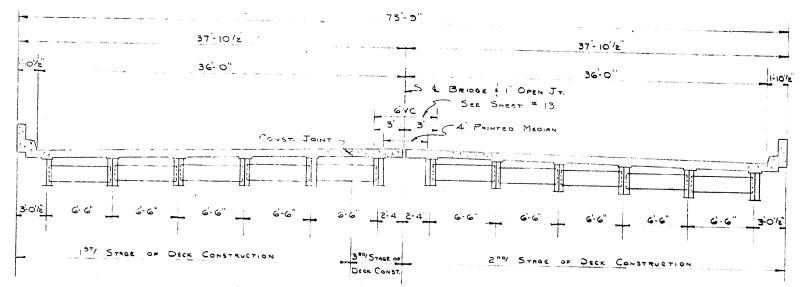
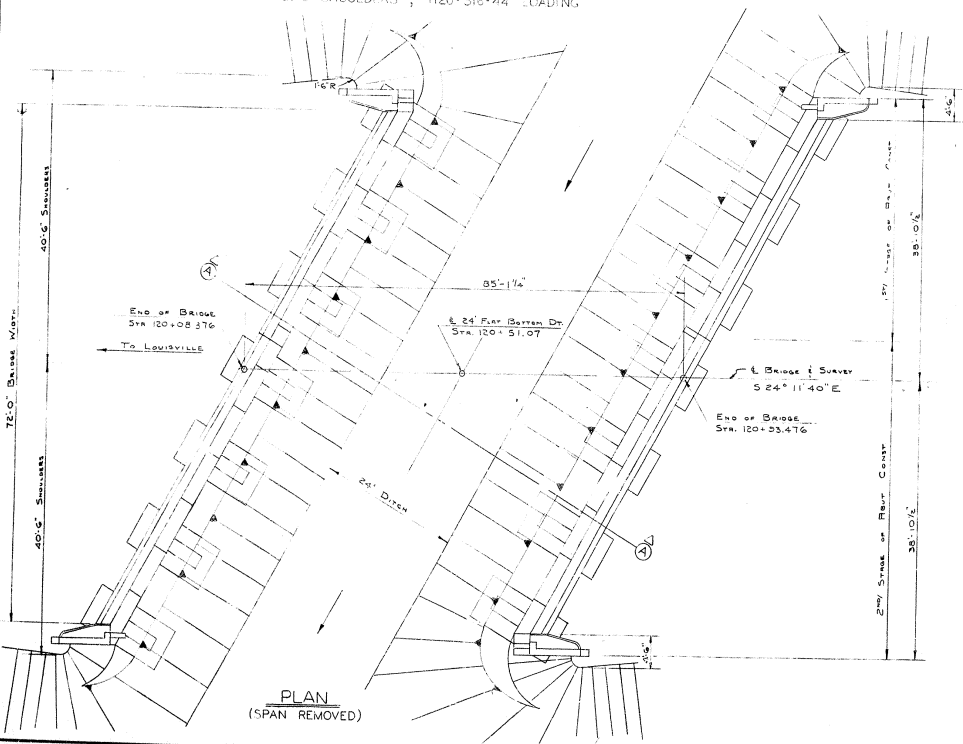
L. H. Leggett, Surveyor
 APPROVED BY: *[Signature]* DATE: _____
 CHECKED BY: _____ DATE: _____
 DRAWN BY: _____ DATE: _____
 SCALE: _____

| NO. | DATE | BY | CHKD. | APP'D. | SHEET NO. | TOTAL SHEETS |
|-----|------|----|-------|--------|-----------|--------------|
| 7 | KY. | | | | | |

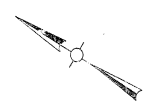


ELEVATION
 ONE 80'-0" SIMPLE WIDE FLANGE STEEL BEAM SPAN (COMP.) 30° SKEW RT.
 12" SAFETY CURBS, 72'-0" ROADWAY, 2:1 FILL SLOPES
 8'-0" SHOULDERS, H20-S16-44 LOADING

SECTION A-A



TYPICAL SECTION
 (SHOWING INTERM. DIAPHRAGMS) (SHOWING END DIAPHRAGMS)



LAYOUT

BRIDGE OVER NORTH DITCH SHEET 2

COMMONWEALTH OF KENTUCKY
 DEPARTMENT OF HIGHWAYS
 FRANKFORT
 COUNTY OF
JEFFERSON
 PRESTON STREET

ROAD

STATION 120 + 50.926 PROJECT NO.

BRIDGE NUMBER RECORDING NO. 16050 DATE

GENERAL NOTE

| REV. | DATE | BY | NO. | DESCRIPTION | SHEET | TOTAL |
|------|------|----|-----|-------------|-------|-------|
| 7 | KY. | | | | | |

SPECIFICATIONS: Kentucky Department of Highways, current Standard with Amendments.

DESIGN LOAD: Bridge designed for H20-S16A loading as specified in the 1961 A.A.S.H.T. Specifications

DESIGN STRESSES: For reinforced concrete:
 $f_s = 20,000$ p.s.i. $f_c = 1,200$ p.s.i.
 $f_c = 3,000$ p.s.i. $w = 200$ p.s.i. for embedment
 $u = 300$ p.s.i. for ΣO $n = 10$

For structural steel:
 $f_s = 20,000$ p.s.i.

FOUNDATION PRESSURE: Footings are designed for a maximum pressure of 5000 psf.

CONCRETE: Class "A" Concrete is to be used throughout.

REINFORCEMENT: Intermediate or hard grade reinforcement shall be used in accordance with A.S.T.M. A15-S87 for billet steel, or A16-S97 for rail steel conforming to bending requirements of AASHTO Spec. HW2. Dimensions shown from face of concrete to bars are clear distances. Spacing of bars is from center to center of bars.

BEVELED EDGES: All exposed concrete edges shall be beveled 7/8" unless otherwise shown.

PREFORMED CORK EXP. JT. MATERIAL, POLYVINYL WATERSTOP, JOINT SEALING COMPOUND AND PREFORMED SEAL: The cost of these items is to be included in the unit price bid for Class "A" Concrete.

PLACING FILLS: Embankment shall be placed simultaneously in front and back of abutments in compacted layers in accordance with the specifications.

BEARING AREAS: Bearing areas to receive superstructure shall be finished smooth and level at the elevations shown on the plans before placing the girders for the span.

ANCHOR BOLT HOLES: The Contractor shall exercise care in placing reinforcing steel in top of substructure units to the dimensions shown so as to miss anchor bolt holes.

ANCHOR BOLTS: The cost of lead required to set anchor bolts and the cost of drilling anchor bolt holes shall be included in the "Lump Sum Bid" for structural steel. The Contractor shall be responsible for keeping holes dry in freezing weather. At the time of setting, anchor bolts are to be heated to a blue heat to assure free flow of lead to bottom of hole.

CONSTRUCTION JOINTS: Construction Joints shall be made at locations shown on plans. Provide substantial keys at all construction joints.

PROTECTIVE COATING: Protective Coating shall be furnished and placed in accordance with the "Special Provision for Linseed Oil Protective Coating".

BILL OF INCIDENTAL MATERIAL: Quantities shown in Bill of Incidental Materials are approximate only, and the Contractor is responsible for furnishing enough material to complete the work in accordance with the Plans and Specifications.

TEMPORARY SUPPORTS: Temporary Supports or shoring will not be permitted under steel girders when pouring the concrete floor slab or when taking top of steel elevations.

PAINT: All structural steel shall be given one shop coat of type 1 red lead paint and two field coats of aluminum paint in accordance with the specifications. Shop paint shall not be applied within 3" of open holes where high strength bolts are to be used for field connections and shall not be applied to steel in contact with concrete.

REMOVING EXISTING STRUCTURE: This contract includes removal of existing bridge in accordance with the plans and specifications. The existing structure is not to be removed until the initial stage of the new work is completed and open to traffic. The cost of all work, labor, equipment and incidentals shall be included in the "Lump Sum Bid" for removing existing structure.

MATERIALS: A.S.T.M. Specifications herein after designated shall govern materials furnished:
 Structural Steel A36-82T
 High Strength Bolts, Nuts, Washers A325-61T
 Stud Shear Connectors A108-C1015
 Molten Lead & Lead Plates S29-55

CONNECTIONS: Unless otherwise provided, shop and field connections shall be 7/8" high strength bolts. Open holes shall be 15/16" diameter.

STRUCTURAL STEEL: "Lump Sum Bid" for structural steel shall be full payment for all structural steel, lead washers, steel pins, lead plates, molten lead, welds and welding material, paint, linen tracings of shop detail and erection drawings, and all tools, labor and materials necessary to erect the structural steel in accordance with the plans and specifications.

HILL TEST REPORTS: Notarized mill test reports in triplicate shall be furnished the Kentucky Department of Highways showing that all materials furnished conform to the specifications.

STEEL FINISH: See table on sheet No. 1@

DIMENSIONS: Dimensions are for a normal temperature of 60° Fahrenheit.

CHANGES IN STRUCTURAL STEEL QUANTITIES: In the event that changes in steel quantities are required due to changes by the Engineer in the plans, additional payments therefor shall be made at a unit price which will be equal to the contract Lump Sum price divided by the estimated total weight.

WELDING SPECIFICATIONS: Welding, welders, welding materials and welding procedures shall comply with American Welding Society Specifications for welded Highway and Railway Bridges, 1963 Edition with paragraph modifications and additions shown on Standard Drawing AWS-1

SHOP ASSEMBLY: Connections for diaphragms may be punched or drilled full size without assembly.

PLATES: Plates in shoes must be true and free of warp.

OPTIONAL TYPES OF SHEAR CONNECTORS: The Contractor shall use one of the following types throughout:
 Option "1" - 4" channel #5.48 / Option "2" - 3/4"x4" studs / Option "3" - 3/4"x4" mean diam. bar spiral

SHEAR CONNECTORS: "Lump Sum Bid" for shear connectors shall be full payment for all shear connectors, welding and welding materials, patent royalties, and all labor and materials necessary to field weld or shop weld shear connectors in place, in accordance with the plans and specifications. Connectors shall be welded with approved welding equipment.

HIGH STRENGTH BOLTS: Connections using high strength bolts shall be in accordance with section 5.2.3-1-5(1) of the specifications. Assembly and dimensions of high strength steel bolts, nuts and washers shall conform to "Specifications for Structural Joints Using A.S.T.M. A325 Bolts" March 1960, approved by the "Research Council on Riveted and Bolted Structural Joints" of the Engineering Foundation. All joints are designed as friction type connections. Installation shall be performed by the turn of nut method.

SHOP PLANS: The Contractor shall submit shop detail plans in accordance with the Specifications.

FIELD WELDING: Where field welding is indicated, welding shall be performed in accordance with the specifications for welding materials and welding. Welding procedures shall be submitted by the erector to the Department of Highways for approval.

TRAFFIC DETOUR: When initial stage of construction is complete and ready for traffic, the Contractor shall be responsible for furnishing adequate barricades and other safeguards according to the Specifications and as directed by the Engineer. The cost of this work is to be included in the lump sum bid for removing existing structure.

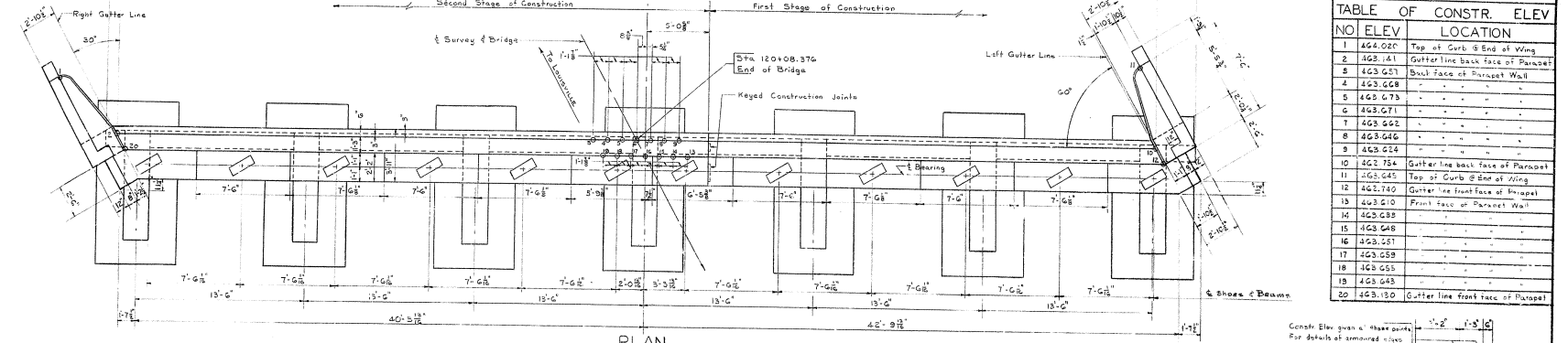
DRAWN BY: [Name] CHECKED BY: [Name] DATE: [Date]
 DESIGNED BY: [Name] CHECKED BY: [Name] DATE: [Date]
 APPROVED BY: [Name] DATE: [Date]

BRIDGE OVER NORTH DITCH SHEET 3

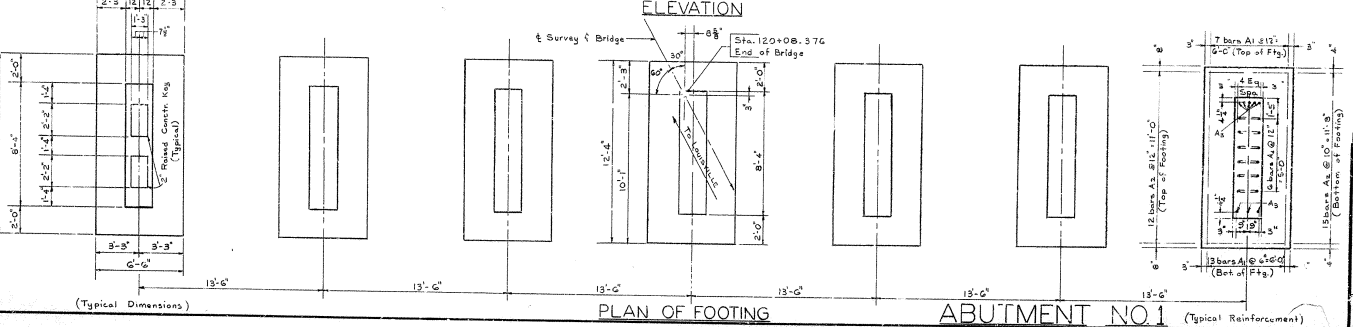
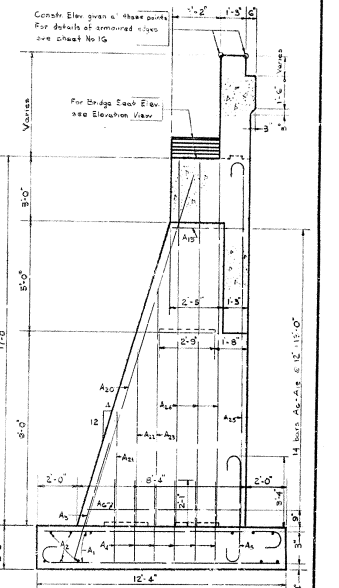
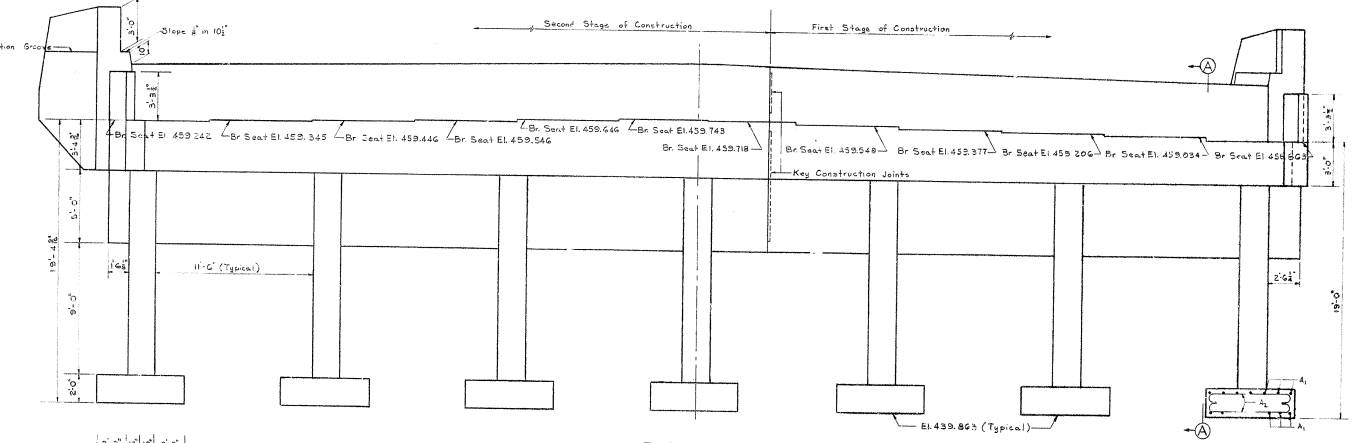
COMMONWEALTH OF KENTUCKY
 DEPARTMENT OF HIGHWAYS
 FRANKFORT
 COUNTY OF
JEFFERSON
 PRESTON STREET
 ROAD

STATION 101.50 926 PROJECT NO. [Blank]

BRIDGE NUMBER DRAWING NO. 16050 SHEET [Blank]



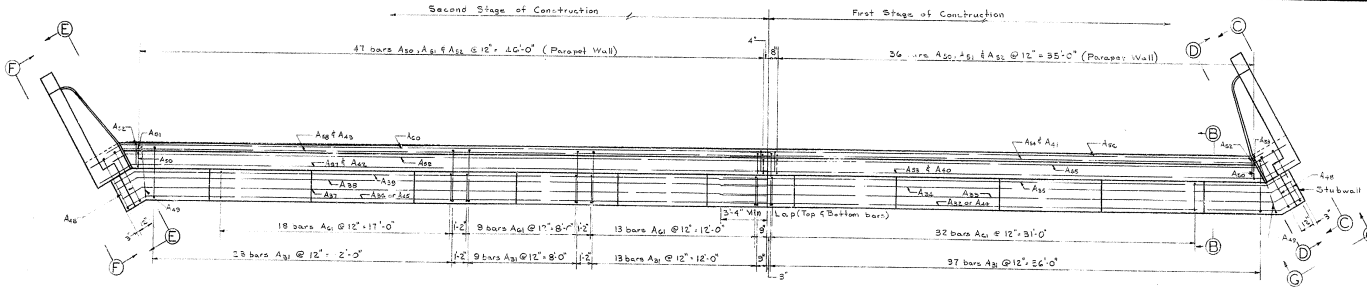
| NO. | ELEV. | LOCATION |
|-----|---------|----------------------------------|
| 1 | 424.022 | Top at Curb @ End of Wing |
| 2 | 423.441 | Gutterline back face of Parapet |
| 3 | 423.651 | Back face of Parapet Wall |
| 4 | 423.628 | - - - - - |
| 5 | 423.673 | - - - - - |
| 6 | 423.671 | - - - - - |
| 7 | 423.522 | - - - - - |
| 8 | 423.628 | - - - - - |
| 9 | 423.628 | - - - - - |
| 10 | 422.754 | Gutterline back face of Parapet |
| 11 | 423.645 | Top of Curb @ End of Wing |
| 12 | 423.740 | Gutterline front face of Parapet |
| 13 | 423.610 | Front face of Parapet Wall |
| 14 | 423.628 | - - - - - |
| 15 | 423.648 | - - - - - |
| 16 | 423.651 | - - - - - |
| 17 | 423.658 | - - - - - |
| 18 | 423.655 | - - - - - |
| 19 | 423.643 | - - - - - |
| 20 | 423.130 | Gutterline front face of Parapet |



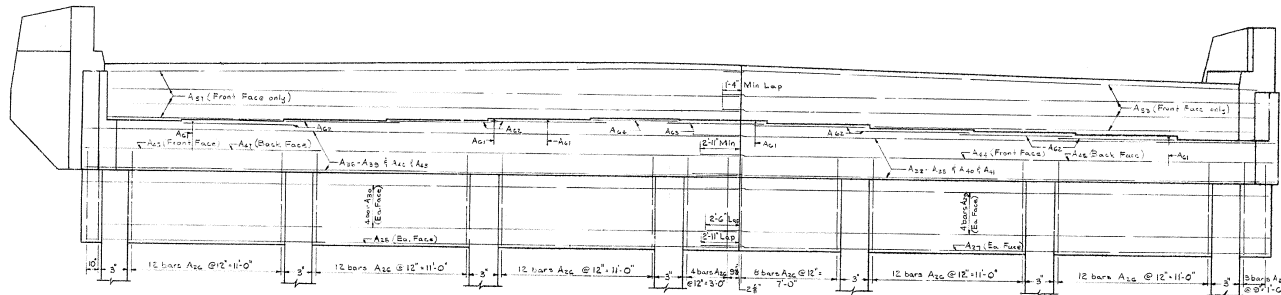
DRAWN BY: S. J. SHERIDAN, CIVIL ENGINEER
 CHECKED BY: J. M. SHERIDAN, CIVIL ENGINEER
 DATE: 10/2/50
 PROJECT NO. 16050
 SHEET NO. 4

BRIDGE OVER NORTH DITCH SHEET 4
COMMONWEALTH OF KENTUCKY
 DEPARTMENT OF HIGHWAYS
 FRANKFORT
 COUNTY OF
JEFFERSON
 PRESTON STREET
 ROAD
 STATION 120+50.926 PROJECT NO.
 BRIDGE NUMBER 16050
 DATE

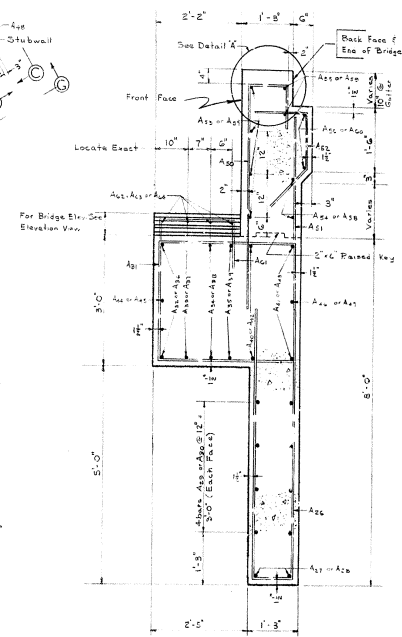
| REV. | DATE | BY | CHK. | APP. | DESCRIPTION |
|------|------|----|------|------|-------------|
| 7 | KY. | | | | |



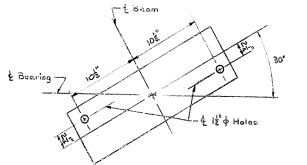
PLAN
(Showing Reinforcement Only)



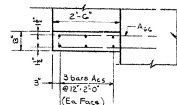
ELEVATION
(Showing Reinforcement Only)



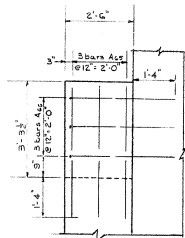
SECTION B-B



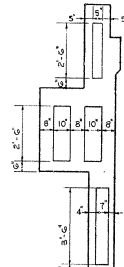
DETAIL OF ANCHOR BOLT HOLES
(Typical)



STUBWALL - PLAN
(Showing typical dimensions and reinforcement)

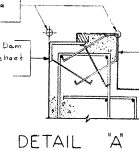


STUBWALL - ELEVATION
(Showing spiral reinforcement)



SECTION
(Showing Construction Keys)

Check Elevations given at these points.
For Expansion Dam details see sheet No 17
AE1 - To be modified. See Sheet No 16



DETAIL A

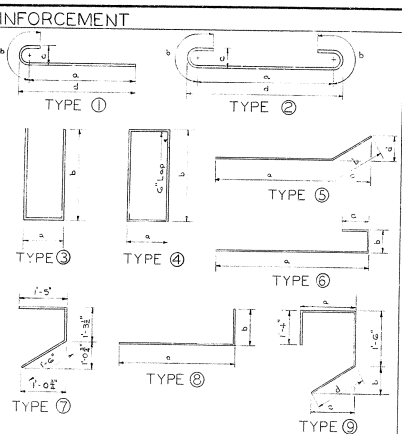
ABUTMENT NO 1

BRIDGE OVER NORTH DITCH SHEET 5

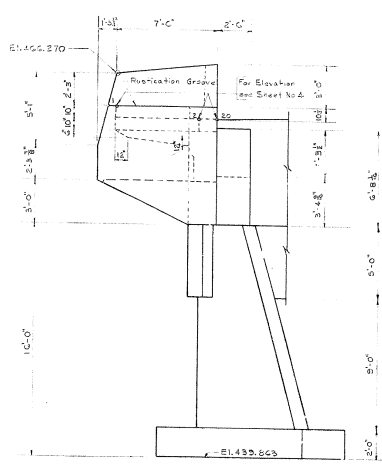
COMMONWEALTH OF KENTUCKY
DEPARTMENT OF HIGHWAYS
FRANKFORT
COUNTY OF
JEFFERSON
PRESTON STREET
ROAD
STATION 120+50.926 PROJECT NO.
BRIDGE NUMBER 16950

DESIGNED BY: [] DATE: []
 DRAWN BY: [] DATE: []
 CHECKED BY: [] DATE: []
 APPR'D BY: [] DATE: []
 LICENSED SURVEYOR: [] DATE: []
 CIVIL ENGINEER: [] DATE: []

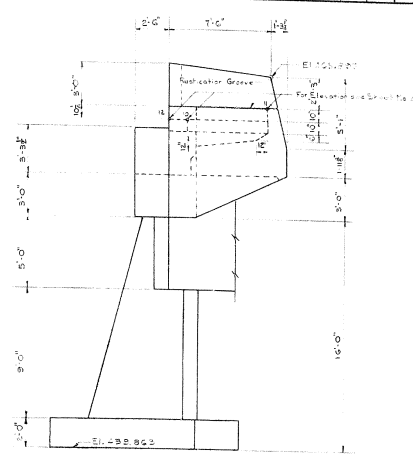
| NO. | QTY. | LENGTH FT IN | LOCATION | BILL OF REINFORCEMENT | | | |
|------|------|-----------------|--------------|-----------------------|-------|-------|-------|
| | | | | FT IN | FT IN | FT IN | FT IN |
| A1 | 10 | 140 5 12 6 | Footings | 11 | 8 | 0 | 10 |
| A2 | 10 | 180 7 8 | " | 8 | 7 | 0 | 10 |
| A3 | 51 | 21 6 5 2 | " | 1 | 6 | 3 | 8 |
| A4 | 4 | 42 3 8 10 | " | 5 | 6 | 1 | 0 |
| A5 | 3 | 85 5 0 2 | " | 1 | 1 | 10 | 3 |
| A6 | 1 | 92 0 0 | Column Hoops | 0 | 1 | 6 | 5 |
| A7 | 1 | 1 19 4 | " | 1 | 1 | 7 | 2 |
| A8 | 1 | 1 0 | " | 1 | 1 | 0 | 0 |
| A9 | 1 | 1 0 | " | 1 | 1 | 0 | 0 |
| A10 | 1 | 1 0 | " | 1 | 1 | 0 | 0 |
| A11 | 1 | 1 0 | " | 1 | 1 | 0 | 0 |
| A12 | 1 | 1 0 | " | 1 | 1 | 0 | 0 |
| A13 | 1 | 1 0 | " | 1 | 1 | 0 | 0 |
| A14 | 1 | 1 0 | " | 1 | 1 | 0 | 0 |
| A15 | 1 | 1 0 | " | 1 | 1 | 0 | 0 |
| A16 | 1 | 1 0 | " | 1 | 1 | 0 | 0 |
| A17 | 1 | 1 0 | " | 1 | 1 | 0 | 0 |
| A18 | 1 | 1 0 | " | 1 | 1 | 0 | 0 |
| A19 | 1 | 1 0 | " | 1 | 1 | 0 | 0 |
| A20 | 1 | 1 0 | " | 1 | 1 | 0 | 0 |
| A21 | 1 | 1 0 | " | 1 | 1 | 0 | 0 |
| A22 | 1 | 1 0 | " | 1 | 1 | 0 | 0 |
| A23 | 1 | 1 0 | " | 1 | 1 | 0 | 0 |
| A24 | 1 | 1 0 | " | 1 | 1 | 0 | 0 |
| A25 | 1 | 1 0 | " | 1 | 1 | 0 | 0 |
| A26 | 1 | 1 0 | " | 1 | 1 | 0 | 0 |
| A27 | 1 | 1 0 | " | 1 | 1 | 0 | 0 |
| A28 | 1 | 1 0 | " | 1 | 1 | 0 | 0 |
| A29 | 1 | 1 0 | " | 1 | 1 | 0 | 0 |
| A30 | 1 | 1 0 | " | 1 | 1 | 0 | 0 |
| A31 | 1 | 1 0 | " | 1 | 1 | 0 | 0 |
| A32 | 1 | 1 0 | " | 1 | 1 | 0 | 0 |
| A33 | 1 | 1 0 | " | 1 | 1 | 0 | 0 |
| A34 | 1 | 1 0 | " | 1 | 1 | 0 | 0 |
| A35 | 1 | 1 0 | " | 1 | 1 | 0 | 0 |
| A36 | 1 | 1 0 | " | 1 | 1 | 0 | 0 |
| A37 | 1 | 1 0 | " | 1 | 1 | 0 | 0 |
| A38 | 1 | 1 0 | " | 1 | 1 | 0 | 0 |
| A39 | 1 | 1 0 | " | 1 | 1 | 0 | 0 |
| A40 | 1 | 1 0 | " | 1 | 1 | 0 | 0 |
| A41 | 1 | 1 0 | " | 1 | 1 | 0 | 0 |
| A42 | 1 | 1 0 | " | 1 | 1 | 0 | 0 |
| A43 | 1 | 1 0 | " | 1 | 1 | 0 | 0 |
| A44 | 1 | 1 0 | " | 1 | 1 | 0 | 0 |
| A45 | 1 | 1 0 | " | 1 | 1 | 0 | 0 |
| A46 | 1 | 1 0 | " | 1 | 1 | 0 | 0 |
| A47 | 1 | 1 0 | " | 1 | 1 | 0 | 0 |
| A48 | 1 | 1 0 | " | 1 | 1 | 0 | 0 |
| A49 | 1 | 1 0 | " | 1 | 1 | 0 | 0 |
| A50 | 1 | 1 0 | " | 1 | 1 | 0 | 0 |
| A51 | 1 | 1 0 | " | 1 | 1 | 0 | 0 |
| A52 | 1 | 1 0 | " | 1 | 1 | 0 | 0 |
| A53 | 1 | 1 0 | " | 1 | 1 | 0 | 0 |
| A54 | 1 | 1 0 | " | 1 | 1 | 0 | 0 |
| A55 | 1 | 1 0 | " | 1 | 1 | 0 | 0 |
| A56 | 1 | 1 0 | " | 1 | 1 | 0 | 0 |
| A57 | 1 | 1 0 | " | 1 | 1 | 0 | 0 |
| A58 | 1 | 1 0 | " | 1 | 1 | 0 | 0 |
| A59 | 1 | 1 0 | " | 1 | 1 | 0 | 0 |
| A60 | 1 | 1 0 | " | 1 | 1 | 0 | 0 |
| A61 | 1 | 1 0 | " | 1 | 1 | 0 | 0 |
| A62 | 1 | 1 0 | " | 1 | 1 | 0 | 0 |
| A63 | 1 | 1 0 | " | 1 | 1 | 0 | 0 |
| A64 | 1 | 1 0 | " | 1 | 1 | 0 | 0 |
| A65 | 1 | 1 0 | " | 1 | 1 | 0 | 0 |
| A66 | 1 | 1 0 | " | 1 | 1 | 0 | 0 |
| A67 | 1 | 1 0 | " | 1 | 1 | 0 | 0 |
| A68 | 1 | 1 0 | " | 1 | 1 | 0 | 0 |
| A69 | 1 | 1 0 | " | 1 | 1 | 0 | 0 |
| A70 | 1 | 1 0 | " | 1 | 1 | 0 | 0 |
| A71 | 1 | 1 0 | " | 1 | 1 | 0 | 0 |
| A72 | 1 | 1 0 | " | 1 | 1 | 0 | 0 |
| A73 | 1 | 1 0 | " | 1 | 1 | 0 | 0 |
| A74 | 1 | 1 0 | " | 1 | 1 | 0 | 0 |
| A75 | 1 | 1 0 | " | 1 | 1 | 0 | 0 |
| A76 | 1 | 1 0 | " | 1 | 1 | 0 | 0 |
| A77 | 1 | 1 0 | " | 1 | 1 | 0 | 0 |
| A78 | 1 | 1 0 | " | 1 | 1 | 0 | 0 |
| A79 | 1 | 1 0 | " | 1 | 1 | 0 | 0 |
| A80 | 1 | 1 0 | " | 1 | 1 | 0 | 0 |
| A81 | 1 | 1 0 | " | 1 | 1 | 0 | 0 |
| A82 | 1 | 1 0 | " | 1 | 1 | 0 | 0 |
| A83 | 1 | 1 0 | " | 1 | 1 | 0 | 0 |
| A84 | 1 | 1 0 | " | 1 | 1 | 0 | 0 |
| A85 | 1 | 1 0 | " | 1 | 1 | 0 | 0 |
| A86 | 1 | 1 0 | " | 1 | 1 | 0 | 0 |
| A87 | 1 | 1 0 | " | 1 | 1 | 0 | 0 |
| A88 | 1 | 1 0 | " | 1 | 1 | 0 | 0 |
| A89 | 1 | 1 0 | " | 1 | 1 | 0 | 0 |
| A90 | 1 | 1 0 | " | 1 | 1 | 0 | 0 |
| A91 | 1 | 1 0 | " | 1 | 1 | 0 | 0 |
| A92 | 1 | 1 0 | " | 1 | 1 | 0 | 0 |
| A93 | 1 | 1 0 | " | 1 | 1 | 0 | 0 |
| A94 | 1 | 1 0 | " | 1 | 1 | 0 | 0 |
| A95 | 1 | 1 0 | " | 1 | 1 | 0 | 0 |
| A96 | 1 | 1 0 | " | 1 | 1 | 0 | 0 |
| A97 | 1 | 1 0 | " | 1 | 1 | 0 | 0 |
| A98 | 1 | 1 0 | " | 1 | 1 | 0 | 0 |
| A99 | 1 | 1 0 | " | 1 | 1 | 0 | 0 |
| A100 | 1 | 1 0 | " | 1 | 1 | 0 | 0 |



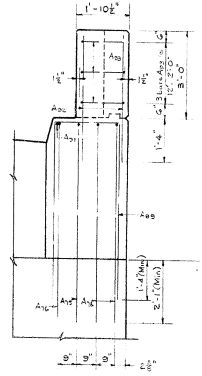
ESTIMATE OF QUANTITIES
 CONCRETE CLASS A 171.1 CU.YDS.
 REINFORCEMENT 19630 LBS



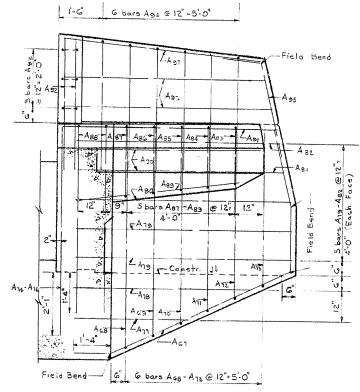
ELEVATION F-F
(Showing Dimensions)



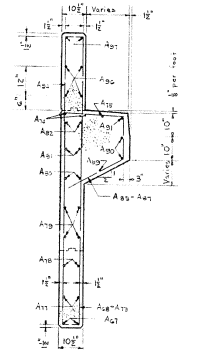
ELEVATION C-C
(Showing Dimensions)



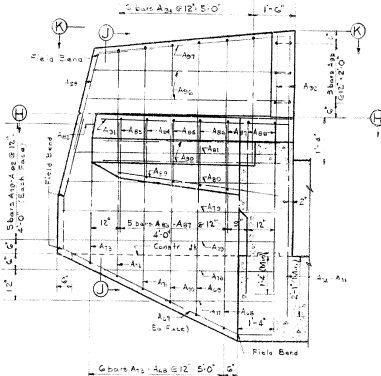
ELEVATION G-G
(Showing reinforcement with stirrups removed)



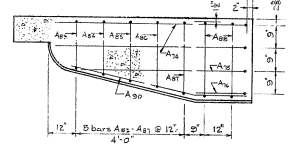
ELEVATION E-E
(Showing location of reinforcement)



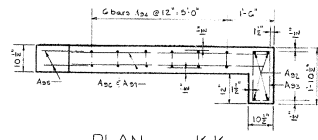
SECTION J-J
(Typical for both Wings)



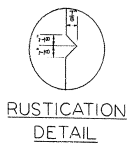
ELEVATION D-D
(Showing location of reinforcement)



SECTION H-H
(Showing reinforcement in Safety Curb)
(Typical for Curbs)



PLAN K-K
(Typical for both Wings)



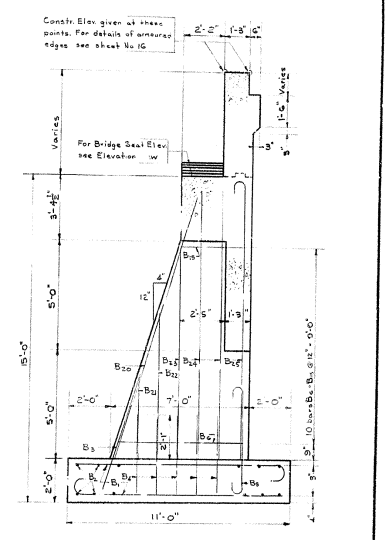
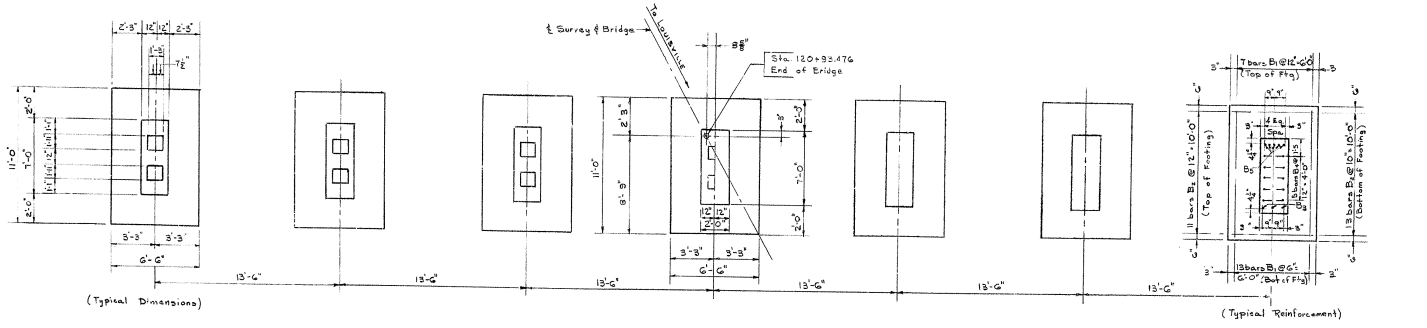
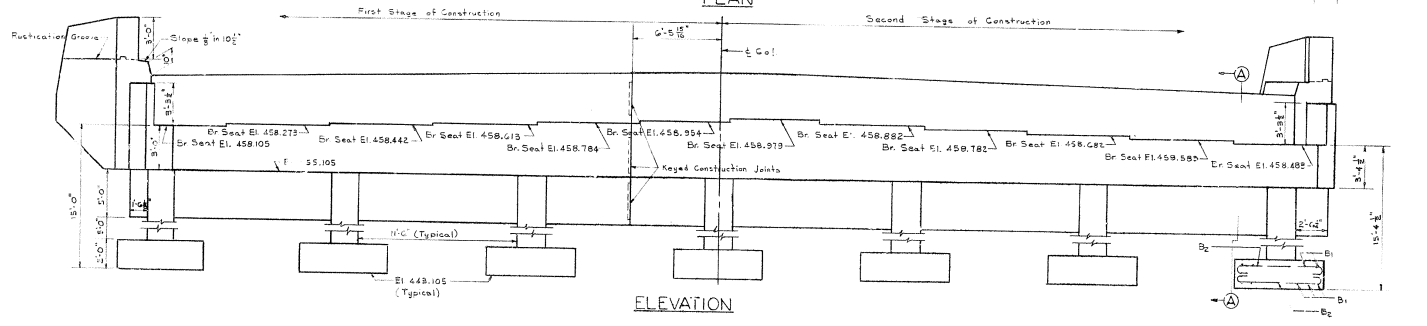
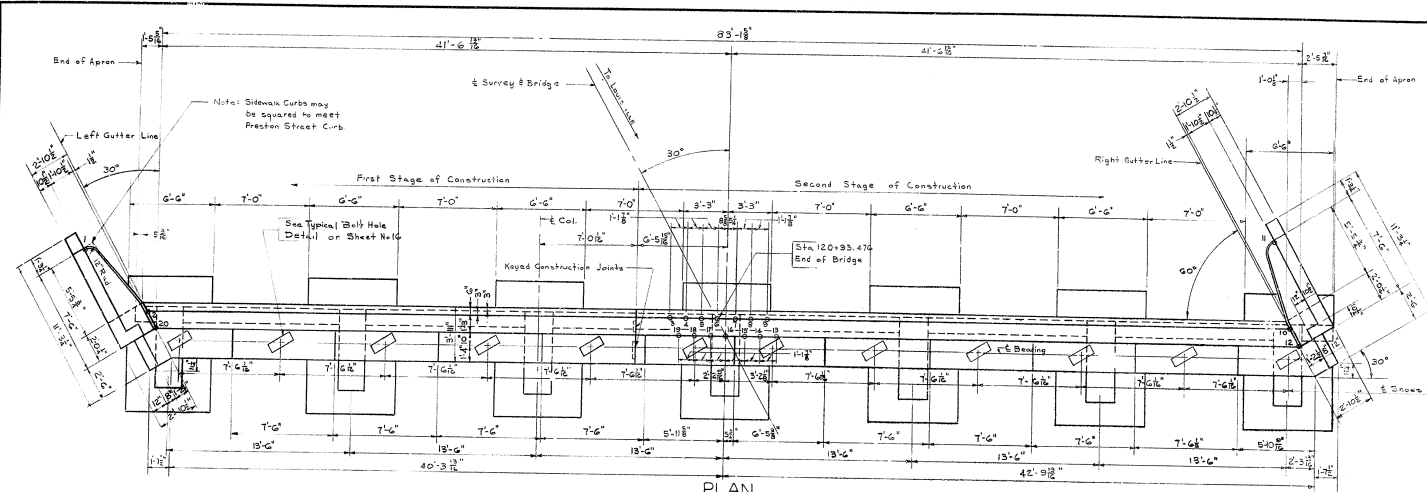
**RUSTICATION
DETAIL**

ABUTMENT NO. 1

BRIDGE OVER NORTH DITCH SHEET 6
COMMONWEALTH OF KENTUCKY
 DEPARTMENT OF HIGHWAYS
 FRANKFORT
 COUNTY OF
JEFFERSON
 PRESTON STREET
 ROAD
 STATION 120+50.926 PROJECT NO.
 BRIDGE NUMBER DRAWING 16050 INDEX

| REV | DATE | BY | CHK | APP | DESCRIPTION |
|-----|------|----|-----|-----|-------------|
| 7 | KY. | | | | |

| TABLE OF CONSTRUCTION ELEVATIONS | | |
|----------------------------------|-----------|------------------------------------|
| NUMBER | ELEVATION | LOCATION |
| 1 | 462.737 | Top of Curb @ End of Wing |
| 2 | 461.981 | Gutter Line back face of abutment |
| 3 | 462.811 | Back face of Parapet Wall |
| 4 | 462.834 | " " " " |
| 5 | 462.850 | " " " " |
| 6 | 462.858 | " " " " |
| 7 | 462.861 | " " " " |
| 8 | 462.856 | " " " " |
| 9 | 462.844 | " " " " |
| 10 | 462.338 | Gutter Line back face of abutment |
| 11 | 463.114 | Top of Curb @ End of Wing |
| 12 | 462.352 | Gutter Line front face of abutment |
| 13 | 462.858 | Front face of Parapet Wall |
| 14 | 462.869 | " " " " |
| 15 | 462.874 | " " " " |
| 16 | 462.872 | " " " " |
| 17 | 462.865 | " " " " |
| 18 | 462.847 | " " " " |
| 19 | 462.823 | " " " " |
| 20 | 461.963 | Gutter Line front face of abutment |



BRIDGE OVER NORTH DITCH SHEET 7

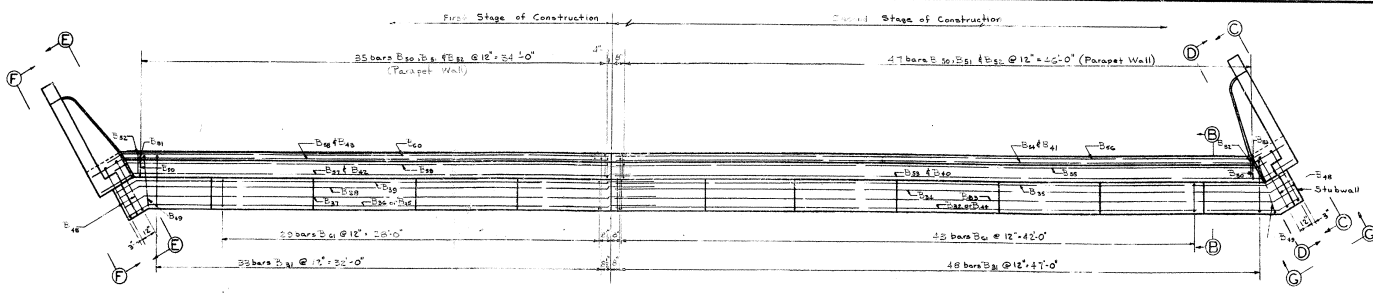
COMMONWEALTH OF KENTUCKY
DEPARTMENT OF HIGHWAYS
 FRANKFORT
 COUNTY OF
JEFFERSON
 PRESTON STREET
 ROAD

STATION 120+50.926 PROJECT NO. _____
 BRIDGE NUMBER _____ DRAWING NO. 16050
 SHEET NO. _____

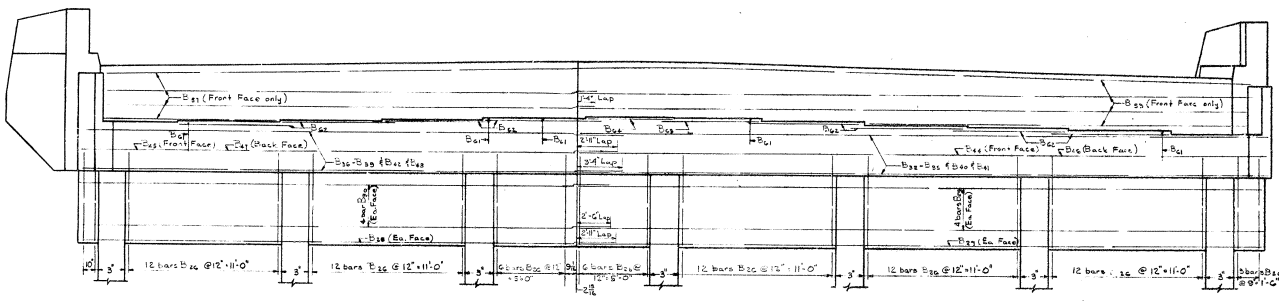
DESIGNED BY: J. J. ...
 CHECKED BY: ...
 DATE: ...

ABUTMENT NO.2

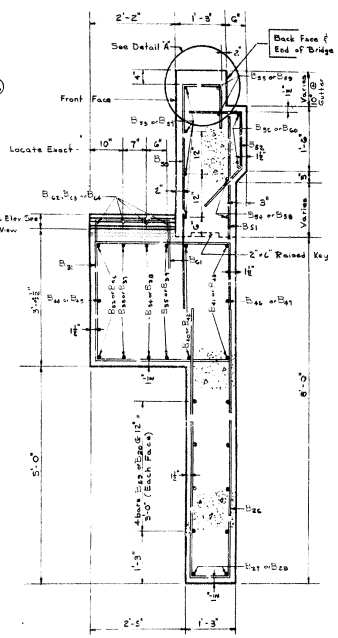
| | | | | |
|------|-----|-------|-------|-----|
| DATE | BY | CHK'D | APP'D | REV |
| 7 | KY. | | | |



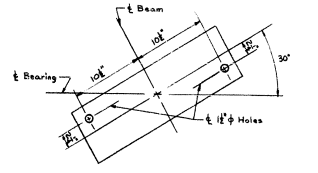
PLAN
(Showing Reinforcement Only)



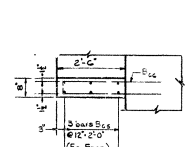
ELEVATION
(Showing Reinforcement Only)



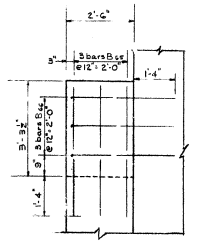
SECTION B-B



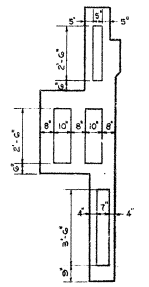
DETAIL OF ANCHOR BOLT HOLES
(Typical)



STUBWALL - PLAN
(Showing typical dimensions and reinforcement)

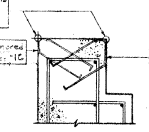


STUBWALL - ELEVATION
(Showing typical reinforcement)



SECTION
(Showing Construction Keys)

Curb Elevations
given as these
units
3'-0" - 3'-0" Δ Above
Edge See sheet 16
AE1 - To be
modified See
Sheet No 16



DETAIL A

ABUTMENT NO 2

BRIDGE OVER NORTH DITCH SHEET B

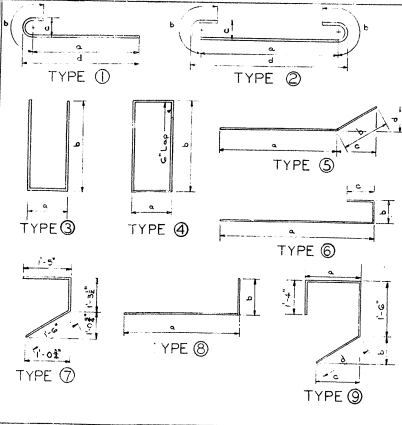
COMMONWEALTH OF KENTUCKY
DEPARTMENT OF HIGHWAYS
FRANKFORT
COUNTY OF
JEFFERSON
PRESTON STREET
ROAD

| | |
|---------------|-------------|
| STATION | PROJECT NO. |
| 120+50.926 | 16050 |
| BRIDGE NUMBER | |
| | |

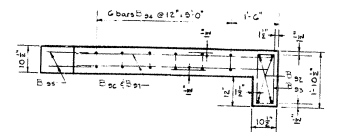
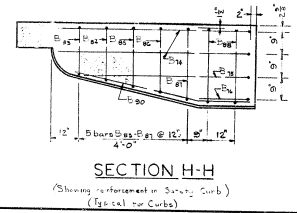
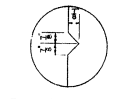
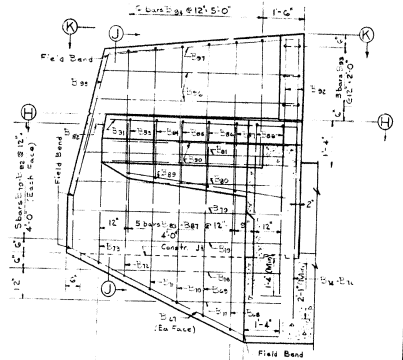
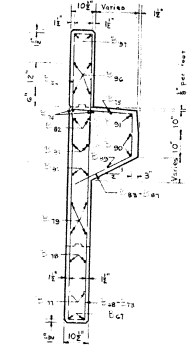
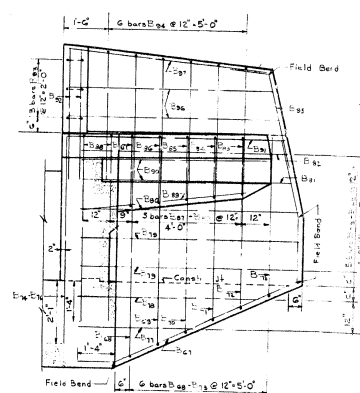
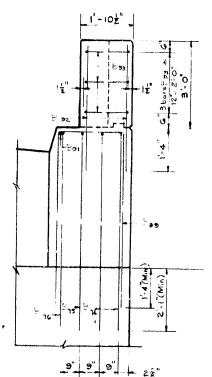
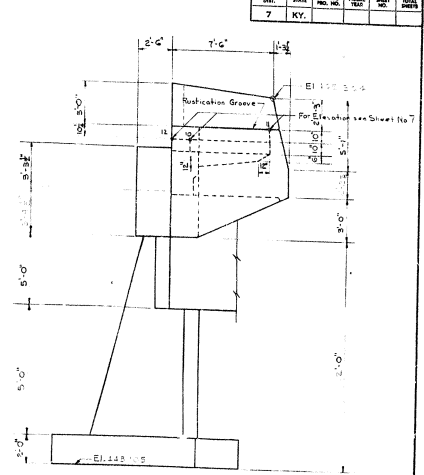
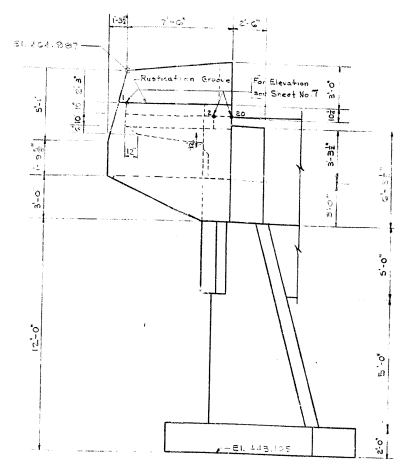
DRAWN BY: STANLEY J. BIRNBAUM, CIVIL ENGINEER
 CHECKED BY: JAMES H. HARRIS, CIVIL ENGINEER
 DATE: 1/15/50
 PROJECT NO. 16050
 SHEET NO. 7

| LINE NO. | STATION | LENGTH FT. IN. | LOCATION | | | |
|----------|---------|-------------------|----------|---------|---------|---------|
| | | | FT. IN. | FT. IN. | FT. IN. | FT. IN. |
| 1 | 100+00 | 10 | | | | |
| 2 | 100+10 | 10 | | | | |
| 3 | 100+20 | 10 | | | | |
| 4 | 100+30 | 10 | | | | |
| 5 | 100+40 | 10 | | | | |
| 6 | 100+50 | 10 | | | | |
| 7 | 100+60 | 10 | | | | |
| 8 | 100+70 | 10 | | | | |
| 9 | 100+80 | 10 | | | | |
| 10 | 100+90 | 10 | | | | |
| 11 | 101+00 | 10 | | | | |
| 12 | 101+10 | 10 | | | | |
| 13 | 101+20 | 10 | | | | |
| 14 | 101+30 | 10 | | | | |
| 15 | 101+40 | 10 | | | | |
| 16 | 101+50 | 10 | | | | |
| 17 | 101+60 | 10 | | | | |
| 18 | 101+70 | 10 | | | | |
| 19 | 101+80 | 10 | | | | |
| 20 | 101+90 | 10 | | | | |
| 21 | 102+00 | 10 | | | | |
| 22 | 102+10 | 10 | | | | |
| 23 | 102+20 | 10 | | | | |
| 24 | 102+30 | 10 | | | | |
| 25 | 102+40 | 10 | | | | |
| 26 | 102+50 | 10 | | | | |
| 27 | 102+60 | 10 | | | | |
| 28 | 102+70 | 10 | | | | |
| 29 | 102+80 | 10 | | | | |
| 30 | 102+90 | 10 | | | | |
| 31 | 103+00 | 10 | | | | |
| 32 | 103+10 | 10 | | | | |
| 33 | 103+20 | 10 | | | | |
| 34 | 103+30 | 10 | | | | |
| 35 | 103+40 | 10 | | | | |
| 36 | 103+50 | 10 | | | | |
| 37 | 103+60 | 10 | | | | |
| 38 | 103+70 | 10 | | | | |
| 39 | 103+80 | 10 | | | | |
| 40 | 103+90 | 10 | | | | |
| 41 | 104+00 | 10 | | | | |
| 42 | 104+10 | 10 | | | | |
| 43 | 104+20 | 10 | | | | |
| 44 | 104+30 | 10 | | | | |
| 45 | 104+40 | 10 | | | | |
| 46 | 104+50 | 10 | | | | |
| 47 | 104+60 | 10 | | | | |
| 48 | 104+70 | 10 | | | | |
| 49 | 104+80 | 10 | | | | |
| 50 | 104+90 | 10 | | | | |
| 51 | 105+00 | 10 | | | | |
| 52 | 105+10 | 10 | | | | |
| 53 | 105+20 | 10 | | | | |
| 54 | 105+30 | 10 | | | | |
| 55 | 105+40 | 10 | | | | |
| 56 | 105+50 | 10 | | | | |
| 57 | 105+60 | 10 | | | | |
| 58 | 105+70 | 10 | | | | |
| 59 | 105+80 | 10 | | | | |
| 60 | 105+90 | 10 | | | | |
| 61 | 106+00 | 10 | | | | |
| 62 | 106+10 | 10 | | | | |
| 63 | 106+20 | 10 | | | | |
| 64 | 106+30 | 10 | | | | |
| 65 | 106+40 | 10 | | | | |
| 66 | 106+50 | 10 | | | | |
| 67 | 106+60 | 10 | | | | |
| 68 | 106+70 | 10 | | | | |
| 69 | 106+80 | 10 | | | | |
| 70 | 106+90 | 10 | | | | |
| 71 | 107+00 | 10 | | | | |
| 72 | 107+10 | 10 | | | | |
| 73 | 107+20 | 10 | | | | |
| 74 | 107+30 | 10 | | | | |
| 75 | 107+40 | 10 | | | | |
| 76 | 107+50 | 10 | | | | |
| 77 | 107+60 | 10 | | | | |
| 78 | 107+70 | 10 | | | | |
| 79 | 107+80 | 10 | | | | |
| 80 | 107+90 | 10 | | | | |
| 81 | 108+00 | 10 | | | | |
| 82 | 108+10 | 10 | | | | |
| 83 | 108+20 | 10 | | | | |
| 84 | 108+30 | 10 | | | | |
| 85 | 108+40 | 10 | | | | |
| 86 | 108+50 | 10 | | | | |
| 87 | 108+60 | 10 | | | | |
| 88 | 108+70 | 10 | | | | |
| 89 | 108+80 | 10 | | | | |
| 90 | 108+90 | 10 | | | | |
| 91 | 109+00 | 10 | | | | |
| 92 | 109+10 | 10 | | | | |
| 93 | 109+20 | 10 | | | | |
| 94 | 109+30 | 10 | | | | |
| 95 | 109+40 | 10 | | | | |
| 96 | 109+50 | 10 | | | | |
| 97 | 109+60 | 10 | | | | |
| 98 | 109+70 | 10 | | | | |
| 99 | 109+80 | 10 | | | | |
| 100 | 109+90 | 10 | | | | |

BILL OF REINFORCEMENT



ESTIMATE OF QUANTITIES
 CONCRETE CLASS A 150.8 CU. YDS.
 REINFORCEMENT 17936 LBS.

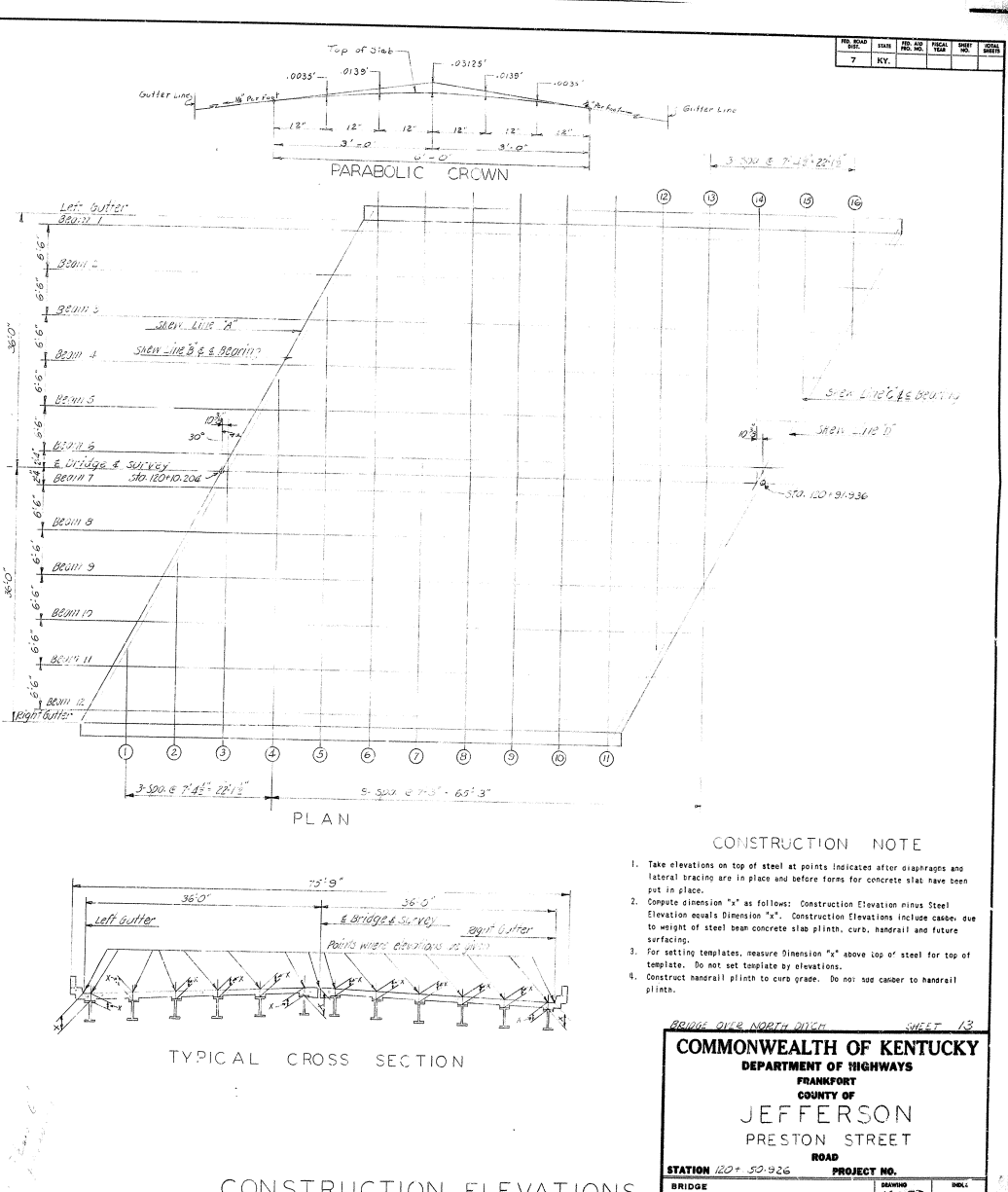


ABUTMENT NO. 2

BRIDGE OVER NORTH DITCH SHEET 6
COMMONWEALTH OF KENTUCKY
 DEPARTMENT OF HIGHWAYS
 FRANKFORT
 COUNTY OF
JEFFERSON
 PRESTON STREET
 ROAD
 STATION 120+50.926 PROJECT NO.
 BRIDGE NUMBER 16050

DESIGNED BY: *George H. ...* CHECKED BY: *...*
 DATE: _____ DATE: _____
 DRAWN BY: *...* REVISED BY: _____
 SCALE: _____

| LOCATION | LEFT GUTTER | | BEAM NO. 1 | | BEAM NO. 2 | | BEAM NO. 3 | | BEAM NO. 4 | | BEAM NO. 5 | | BEAM NO. 6 | | BRIDGE SURVEY | |
|----------------|---------------|-------------|-------------------|-----------------|-------------------|-----------------|-------------------|-----------------|-------------------|-----------------|-------------------|-----------------|-------------------|-----------------|-------------------|-----------------|
| | CONSTR. ELEV. | STEEL ELEV. | CONSTR. TOP ELEV. | STEEL TOP ELEV. | CONSTR. TOP ELEV. | STEEL TOP ELEV. | CONSTR. TOP ELEV. | STEEL TOP ELEV. | CONSTR. TOP ELEV. | STEEL TOP ELEV. | CONSTR. TOP ELEV. | STEEL TOP ELEV. | CONSTR. TOP ELEV. | STEEL TOP ELEV. | CONSTR. TOP ELEV. | STEEL TOP ELEV. |
| SKEN LN A TOP | 462.737 | 462.737 | 462.739 | 462.739 | 462.739 | 462.739 | 462.739 | 462.739 | 462.739 | 462.739 | 462.739 | 462.739 | 462.739 | 462.739 | 462.739 | 462.739 |
| SKEN LN B TOP | 462.739 | 462.739 | 462.739 | 462.739 | 462.739 | 462.739 | 462.739 | 462.739 | 462.739 | 462.739 | 462.739 | 462.739 | 462.739 | 462.739 | 462.739 | 462.739 |
| SKEN LN C TOP | 461.971 | 461.971 | 462.001 | 462.001 | 462.001 | 462.001 | 462.001 | 462.001 | 462.001 | 462.001 | 462.001 | 462.001 | 462.001 | 462.001 | 462.001 | 462.001 |
| SKEN LN D TOP | 461.994 | 461.994 | 462.161 | 462.161 | 462.161 | 462.161 | 462.161 | 462.161 | 462.161 | 462.161 | 462.161 | 462.161 | 462.161 | 462.161 | 462.161 | 462.161 |
| GRID LN 03 TOP | | | | | | | | | | | | | | | | |
| GRID LN 04 TOP | | | | | | | | | | | | | | | | |
| GRID LN 05 TOP | | | 462.756 | 462.756 | 462.756 | 462.756 | 462.756 | 462.756 | 462.756 | 462.756 | 462.756 | 462.756 | 462.756 | 462.756 | 462.756 | 462.756 |
| GRID LN 06 TOP | | | 462.728 | 462.728 | 462.728 | 462.728 | 462.728 | 462.728 | 462.728 | 462.728 | 462.728 | 462.728 | 462.728 | 462.728 | 462.728 | 462.728 |
| GRID LN 07 TOP | | | 462.717 | 462.717 | 462.717 | 462.717 | 462.717 | 462.717 | 462.717 | 462.717 | 462.717 | 462.717 | 462.717 | 462.717 | 462.717 | 462.717 |
| GRID LN 08 TOP | | | 462.695 | 462.695 | 462.695 | 462.695 | 462.695 | 462.695 | 462.695 | 462.695 | 462.695 | 462.695 | 462.695 | 462.695 | 462.695 | 462.695 |
| GRID LN 09 TOP | | | 462.660 | 462.660 | 462.660 | 462.660 | 462.660 | 462.660 | 462.660 | 462.660 | 462.660 | 462.660 | 462.660 | 462.660 | 462.660 | 462.660 |
| GRID LN 10 TOP | | | 462.616 | 462.616 | 462.616 | 462.616 | 462.616 | 462.616 | 462.616 | 462.616 | 462.616 | 462.616 | 462.616 | 462.616 | 462.616 | 462.616 |
| GRID LN 11 TOP | | | 462.565 | 462.565 | 462.565 | 462.565 | 462.565 | 462.565 | 462.565 | 462.565 | 462.565 | 462.565 | 462.565 | 462.565 | 462.565 | 462.565 |
| GRID LN 12 TOP | | | 462.484 | 462.484 | 462.484 | 462.484 | 462.484 | 462.484 | 462.484 | 462.484 | 462.484 | 462.484 | 462.484 | 462.484 | 462.484 | 462.484 |
| GRID LN 13 TOP | | | 462.378 | 462.378 | 462.378 | 462.378 | 462.378 | 462.378 | 462.378 | 462.378 | 462.378 | 462.378 | 462.378 | 462.378 | 462.378 | 462.378 |
| GRID LN 14 TOP | | | 462.230 | 462.230 | 462.230 | 462.230 | 462.230 | 462.230 | 462.230 | 462.230 | 462.230 | 462.230 | 462.230 | 462.230 | 462.230 | 462.230 |
| GRID LN 15 TOP | | | 462.155 | 462.155 | 462.155 | 462.155 | 462.155 | 462.155 | 462.155 | 462.155 | 462.155 | 462.155 | 462.155 | 462.155 | 462.155 | 462.155 |
| GRID LN 16 TOP | | | 462.076 | 462.076 | 462.076 | 462.076 | 462.076 | 462.076 | 462.076 | 462.076 | 462.076 | 462.076 | 462.076 | 462.076 | 462.076 | 462.076 |
| GRID LN 17 TOP | | | | | | | | | | | | | | | | |
| GRID LN 18 TOP | | | | | | | | | | | | | | | | |
| GRID LN 19 TOP | | | | | | | | | | | | | | | | |



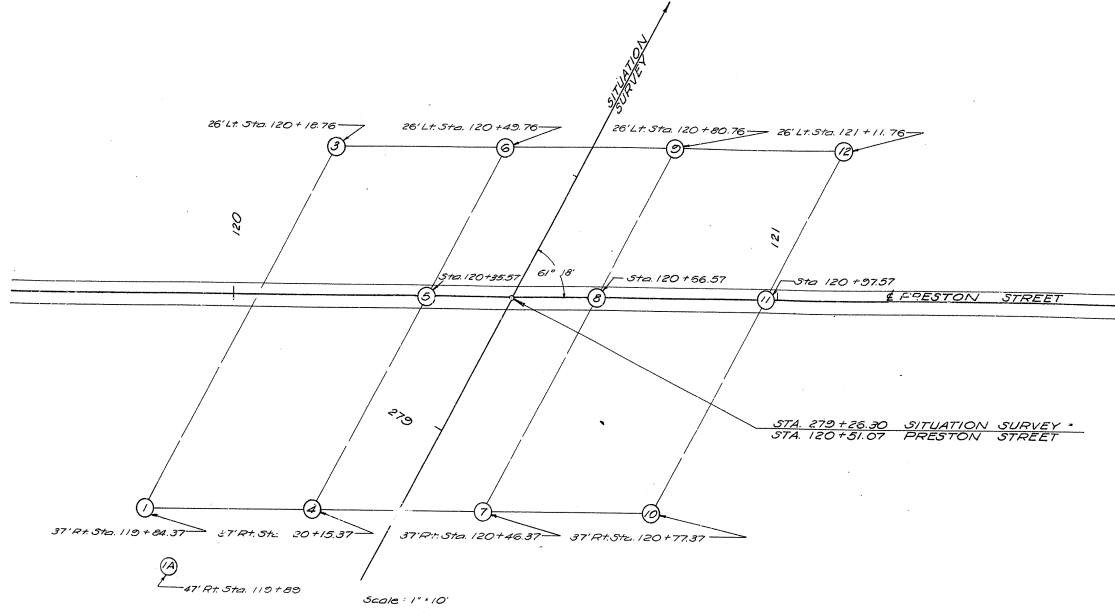
BRIDGE OVER NORTH RIVER SHEET 13
COMMONWEALTH OF KENTUCKY
 DEPARTMENT OF HIGHWAYS
 FRANKFORT
 COUNTY OF
JEFFERSON
 PRESTON STREET
 ROAD
 STATION 120+50.926 PROJECT NO.
 BRIDGE NUMBER 16050 SHELL NO.

CONSTRUCTION ELEVATIONS

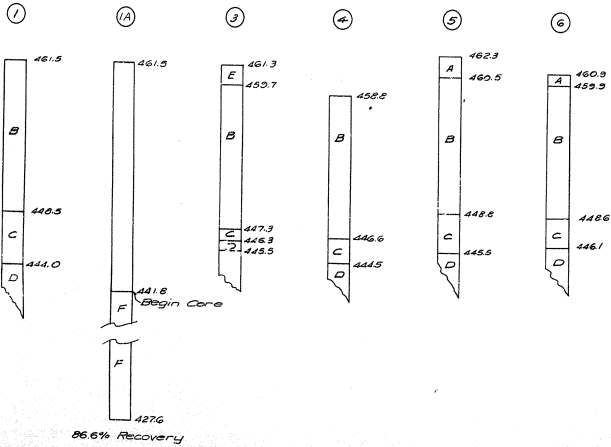
SOUNDING

LAYOUT

| | | |
|-------------------------|-------|--------|
| JEFFERSON CO. 5476 (12) | | |
| REVISION | SHEET | TOTALS |
| 11 | | |



Core Hole

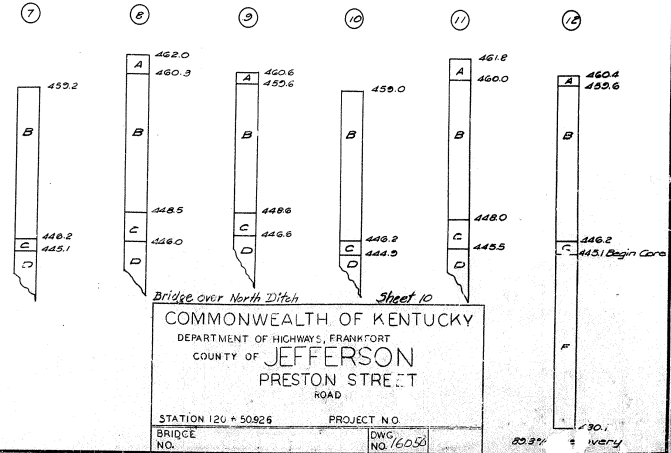


LEGEND

- A - Fill Sand & Gravel
- B - Yellow Sandy Clay
- C - Blue Clay
- D - Clay Shale
- E - Yellow Sandy Clay & Gravel
- F - Black Shale

Vertical Scale: 1" = 5'

Core Hole



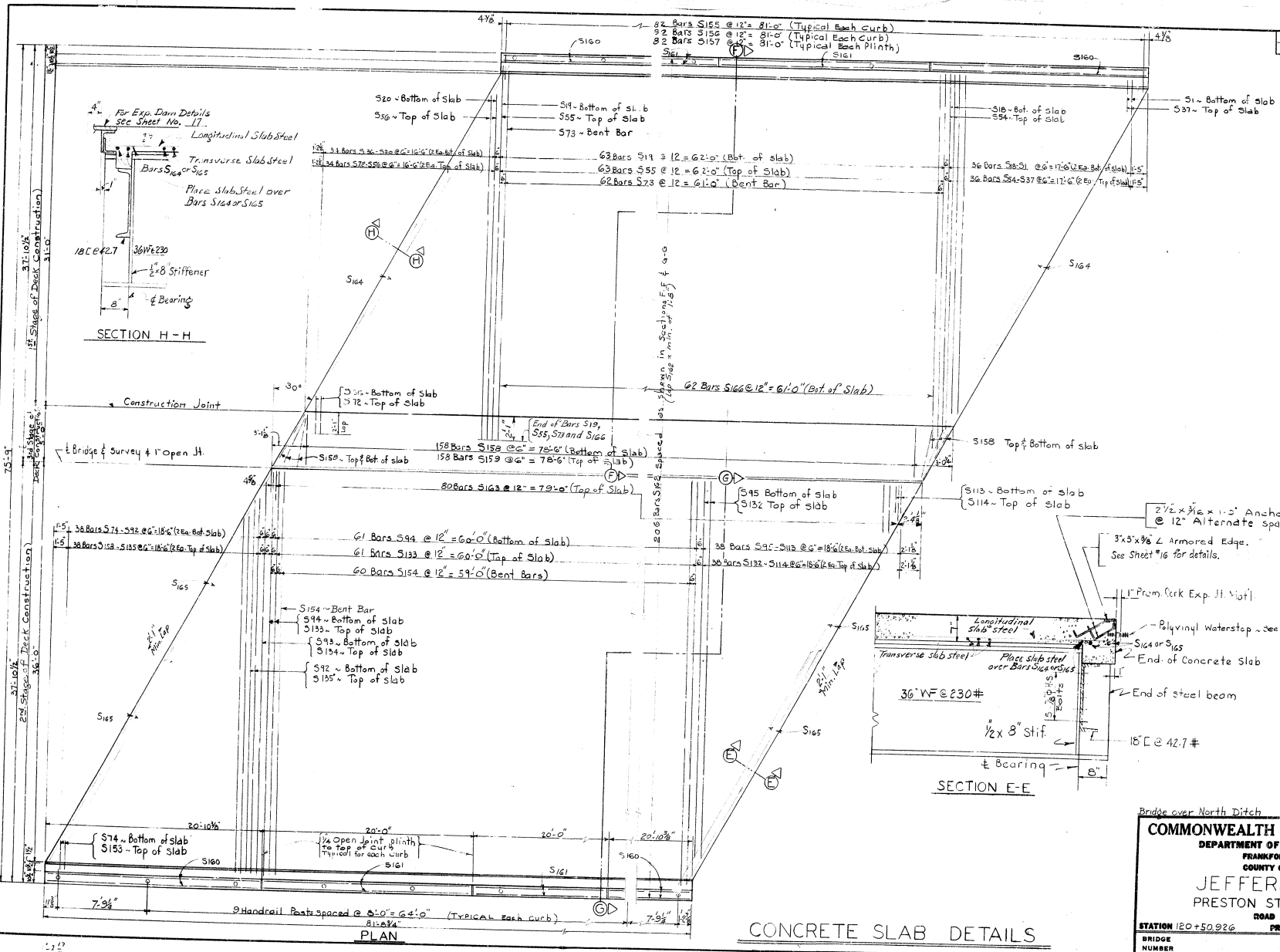
Bridge over North Ditch

Sheet 10

COMMONWEALTH OF KENTUCKY
 DEPARTMENT OF HIGHWAYS, FRANKFORT
 COUNTY OF JEFFERSON
 PRESTON STREET
 ROAD

STATION 120 + 50.26 PROJECT NO.
 BRIDGE NO. DWG. NO. 6090

| NO. | DATE | BY | CHKD. | REVISION |
|-----|------|----|-------|----------|
| 7 | KY. | | | |



| | |
|-------------|------|
| DESIGNED BY | DATE |
| DRAWN BY | DATE |
| CHECKED BY | DATE |
| APPROVED BY | |
| TITLE | |
| PROJECT | |
| DRAWING NO. | |

SHEET 11

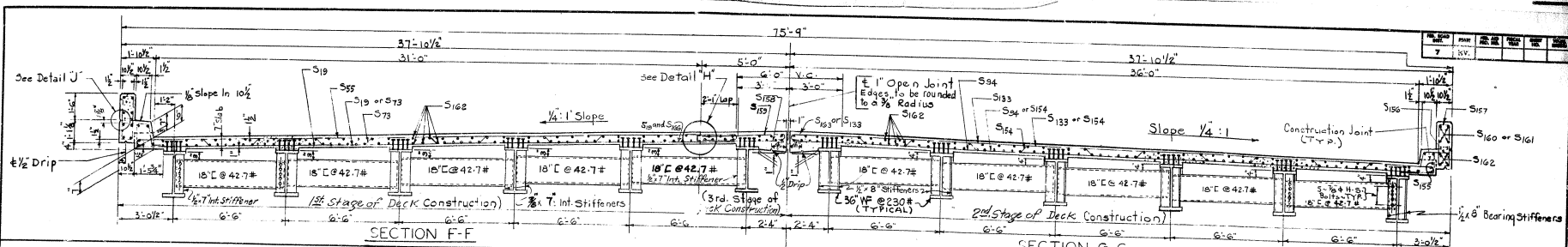
Bridge over North Ditch

COMMONWEALTH OF KENTUCKY
DEPARTMENT OF HIGHWAYS
FRANKFORT
COUNTY OF
JEFFERSON
PRESTON STREET
ROAD

STATION 120+50.926 PROJECT NO. _____

| | | |
|---------------|-----------|-----|
| BRIDGE NUMBER | NO. 16250 | NO. |
|---------------|-----------|-----|

CONCRETE SLAB DETAILS

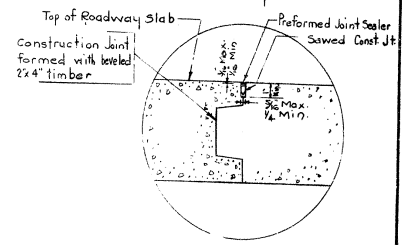


SECTION F-F

SECTION G-G

BILL OF REINFORCEMENT

| NO. | TYPE | SIZE | LENGTH FT./IN. | LOCATION | SECTION F-F | | | | SECTION G-G | | | | | |
|-----|------|------|-------------------|--------------------------|-------------|-----|------|-------|-------------|---|---|---|--|--|
| | | | | | a | b | c | d | a | b | c | d | | |
| 1 | S12 | #5 | 3.0 | Top of Slab - 1st Const. | | | | | | | | | | |
| 2 | S12 | #5 | 4.0 | " " " " | | | | | | | | | | |
| 3 | S12 | #5 | 4.0 | " " " " | | | | | | | | | | |
| 4 | S12 | #5 | 8.2 | " " " " | | | | | | | | | | |
| 5 | S12 | #5 | 9.11 | " " " " | | | | | | | | | | |
| 6 | S12 | #5 | 11.8 | " " " " | | | | | | | | | | |
| 7 | S12 | #5 | 13.4 | " " " " | | | | | | | | | | |
| 8 | S12 | #5 | 15.1 | " " " " | | | | | | | | | | |
| 9 | S12 | #5 | 16.10 | " " " " | | | | | | | | | | |
| 10 | S12 | #5 | 18.7 | " " " " | | | | | | | | | | |
| 11 | S12 | #5 | 20.4 | " " " " | | | | | | | | | | |
| 12 | S12 | #5 | 22.1 | " " " " | | | | | | | | | | |
| 13 | S12 | #5 | 23.29 | " " " " | | | | | | | | | | |
| 14 | S12 | #5 | 25.6 | " " " " | | | | | | | | | | |
| 15 | S12 | #5 | 27.3 | " " " " | | | | | | | | | | |
| 16 | S12 | #5 | 29.0 | " " " " | | | | | | | | | | |
| 17 | S12 | #5 | 30.8 | " " " " | | | | | | | | | | |
| 18 | S12 | #5 | 32.5 | " " " " | | | | | | | | | | |
| 19 | S12 | #5 | 33.11 | " " " " | | | | | | | | | | |
| 20 | S12 | #5 | 31.7 | " " " " | | | | | | | | | | |
| 21 | S12 | #5 | 29.0 | " " " " | | | | | | | | | | |
| 22 | S12 | #5 | 28.1 | " " " " | | | | | | | | | | |
| 23 | S12 | #5 | 26.4 | " " " " | | | | | | | | | | |
| 24 | S12 | #5 | 24.7 | " " " " | | | | | | | | | | |
| 25 | S12 | #5 | 23.11 | " " " " | | | | | | | | | | |
| 26 | S12 | #5 | 21.2 | " " " " | | | | | | | | | | |
| 27 | S12 | #5 | 19.5 | " " " " | | | | | | | | | | |
| 28 | S12 | #5 | 17.9 | " " " " | | | | | | | | | | |
| 29 | S12 | #5 | 15.1 | " " " " | | | | | | | | | | |
| 30 | S12 | #5 | 14.3 | " " " " | | | | | | | | | | |
| 31 | S12 | #5 | 12.6 | " " " " | | | | | | | | | | |
| 32 | S12 | #5 | 10.9 | " " " " | | | | | | | | | | |
| 33 | S12 | #5 | 9.2 | " " " " | | | | | | | | | | |
| 34 | S12 | #5 | 7.5 | " " " " | | | | | | | | | | |
| 35 | S12 | #5 | 5.8 | " " " " | | | | | | | | | | |
| 36 | S12 | #5 | 4.1 | " " " " | | | | | | | | | | |
| 37 | S12 | #5 | 2.4 | " " " " | | | | | | | | | | |
| 38 | S12 | #5 | 0.7 | " " " " | | | | | | | | | | |
| 39 | S12 | #5 | 6.0 | " " " " | 2.7 | 0.0 | 0.4% | 2.1% | | | | | | |
| 40 | S12 | #5 | 6.0 | " " " " | 4.4 | 0.0 | 0.4% | 4.8% | | | | | | |
| 41 | S12 | #5 | 7.8 | " " " " | 2.0 | 0.0 | 0.4% | 6.4% | | | | | | |
| 42 | S12 | #5 | 9.5 | " " " " | 7.9 | 0.0 | 0.4% | 8.1% | | | | | | |
| 43 | S12 | #5 | 12.11 | " " " " | 9.6 | 0.0 | 0.4% | 9.0% | | | | | | |
| 44 | S12 | #5 | 14.8 | " " " " | 11.3 | 0.0 | 0.4% | 11.7% | | | | | | |
| 45 | S12 | #5 | 17.4 | " " " " | 13.0 | 0.0 | 0.4% | 13.4% | | | | | | |
| 46 | S12 | #5 | 19.5 | " " " " | 14.9 | 0.0 | 0.4% | 15.1% | | | | | | |
| 47 | S12 | #5 | 21.2 | " " " " | 16.5 | 0.0 | 0.4% | 16.9% | | | | | | |
| 48 | S12 | #5 | 23.4 | " " " " | 18.2 | 0.0 | 0.4% | 18.6% | | | | | | |
| 49 | S12 | #5 | 25.6 | " " " " | 19.11 | 0.0 | 0.4% | 20.3% | | | | | | |
| 50 | S12 | #5 | 27.3 | " " " " | 21.2 | 0.0 | 0.4% | 22.0% | | | | | | |
| 51 | S12 | #5 | 29.0 | " " " " | 23.4 | 0.0 | 0.4% | 23.8% | | | | | | |
| 52 | S12 | #5 | 30.8 | " " " " | 25.1 | 0.0 | 0.4% | 25.5% | | | | | | |
| 53 | S12 | #5 | 32.5 | " " " " | 26.10 | 0.0 | 0.4% | 27.2% | | | | | | |
| 54 | S12 | #5 | 33.11 | " " " " | 27.7 | 0.0 | 0.4% | 28.1% | | | | | | |
| 55 | S12 | #5 | 31.7 | " " " " | 30.3 | 0.0 | 0.4% | 30.7% | | | | | | |
| 56 | S12 | #5 | 29.0 | " " " " | 32.0 | 0.0 | 0.4% | 32.4% | | | | | | |
| 57 | S12 | #5 | 28.1 | " " " " | 33.6 | 0.0 | 0.4% | 33.0% | | | | | | |
| 58 | S12 | #5 | 26.4 | " " " " | 31.3 | 0.0 | 0.4% | 31.7% | | | | | | |
| 59 | S12 | #5 | 24.7 | " " " " | 28.6 | 0.0 | 0.4% | 29.0% | | | | | | |
| 60 | S12 | #5 | 23.11 | " " " " | 27.9 | 0.0 | 0.4% | 28.1% | | | | | | |

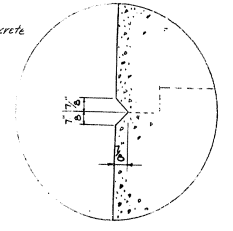


DETAIL 'H'

For additional details & notes on Construction Joint - See Std. Dwg. No. 8-55

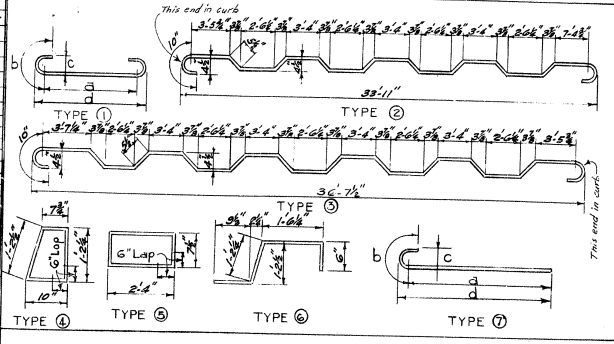
ESTIMATE OF QUANTITIES

CONCRETE, CLASS 'A' @ 152.2 CU YDS.
 REINFORCEMENT @ 36504 LBS.
 * This quantity does not include concrete due to deflection of steel beams.



DETAIL 'J'

(Showing Rusticated Groove Details)



CONCRETE SLAB DETAILS

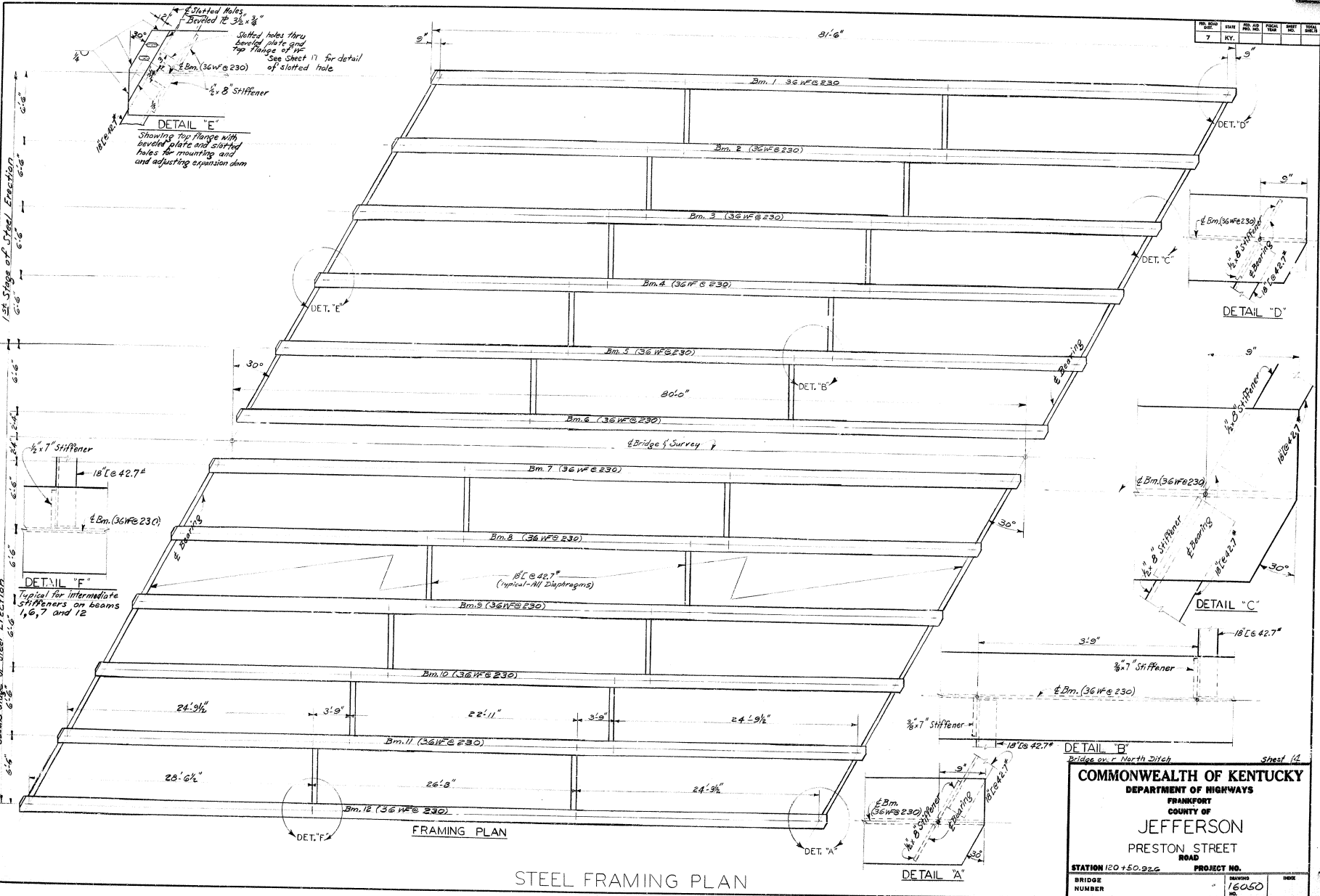
BRIDGE OVER NORTH DITCH

SHEET 12

COMMONWEALTH OF KENTUCKY
 DEPARTMENT OF HIGHWAYS
 FRANKFORT
 COUNTY OF
JEFFERSON
 PRESTON STREET
 ROAD

STATION 120 + 50.926 PROJECT NO. _____
 BRIDGE NUMBER _____ DRAWING NO. 16050
 DATE _____

| REV. | DATE | BY | CHK. | DESCRIPTION |
|------|------|----|------|-------------|
| 7 | KY. | | | |

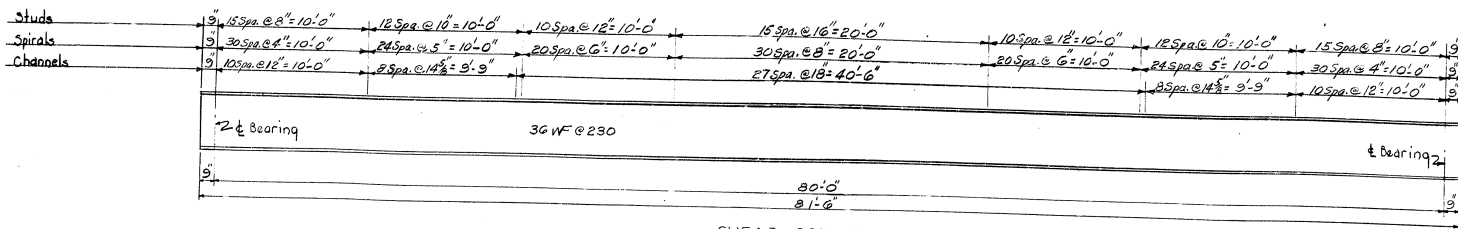


COMMONWEALTH OF KENTUCKY
 DEPARTMENT OF HIGHWAYS
 FRANKFORT
 COUNTY OF
 JEFFERSON
 PRESTON STREET
 ROAD

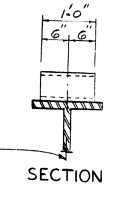
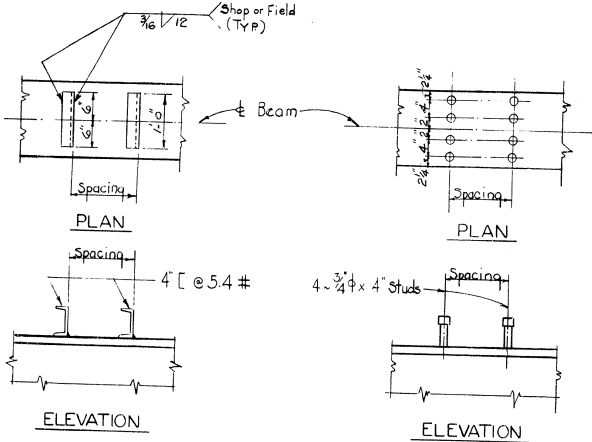
STATION 120+50.926 PROJECT NO.
 BRIDGE NUMBER 16050 DRAWING NO. 16050

DESIGNED BY: *[Signature]*
 CHECKED BY: *[Signature]*
 DATE: *[Date]*

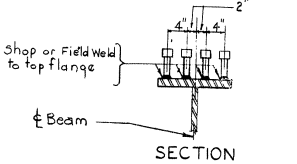
| | | | |
|------|-----|---------|----------|
| DATE | BY | CHECKED | APPROVED |
| 7 | KY. | | |



SHEAR CONNECTORS



ESTIMATED WEIGHT 4147 LBS

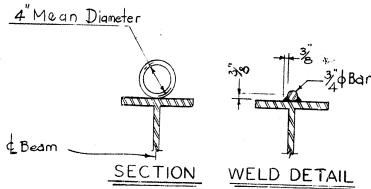
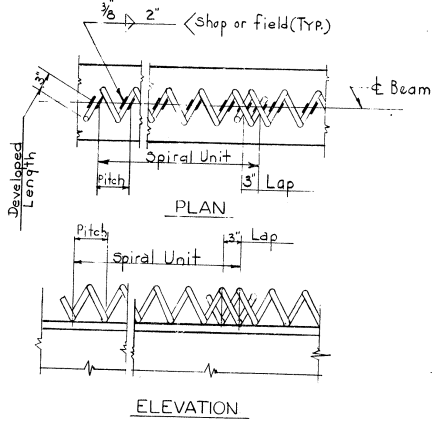


(OPTION 2)

ESTIMATED WEIGHT 2657 LBS

SHEAR CONNECTOR DETAILS

weights shown are for the entire bridge



(OPTION 3)

ESTIMATED WEIGHT 3682 LBS

SHEAR CONNECTOR DETAILS

TOTAL ESTIMATE OF STRUCTURAL STEEL

| | |
|--------------------|--------------------|
| Structural Steel | 243277 Lbs. |
| Expansion Dam | 8939 Lbs. |
| Fixed & Exp. Shoes | 4024 Lbs. |
| * TOTAL | 256240 Lbs. |

* Does not include shear connectors or weld material.

BRIDGE OVER NORTH DITCH SHEET 1/5

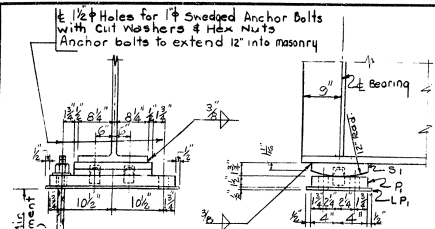
COMMONWEALTH OF KENTUCKY
 DEPARTMENT OF HIGHWAYS
 FRANKFORT
 COUNTY OF
JEFFERSON
 PRESTON STREET
 ROAD

STATION 120+50.926 PROJECT NO. _____

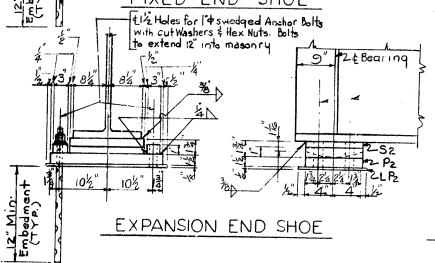
BRIDGE NUMBER 16R 30

| REV. | DATE | BY | CHK | APP |
|------|------|----|-----|-----|
| 7 | KY. | | | |

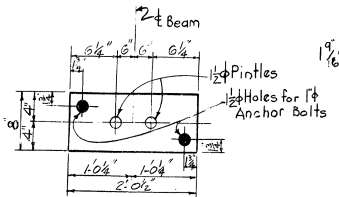
| WELDED FINISH OF STEEL - SPECIFICATIONS | |
|---|-------------|
| Steel Slabs | A.S.A. 2000 |
| Heavy Plates in contact in shoes to be welded | A.S.A. 1000 |
| Milled Ends of Compression Members, Stiffeners & Fillers | A.S.A. 500 |
| Bridge Rollers & Rockers | A.S.A. 250 |
| Pins & Pin Holes | A.S.A. 125 |
| A.S.T.M. Specifications | |
| Structural steel A5e Current Specifications | |
| Steel Pins A105 Current Spec. (Grade 1016 to 1030 Inc.) | |
| Sheet Lead & Lead for Anchor Jowel Holes 829 Current Spec. | |
| Pintles A5e or A105 Current Spec. (Grade 1016 to 1030 Inc.) | |



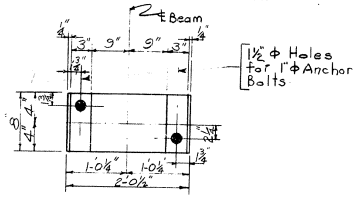
FIXED END SHOE



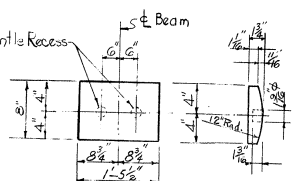
EXPANSION END SHOE



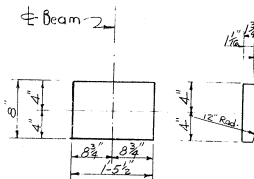
PLAN-MASONRY PLATE P1



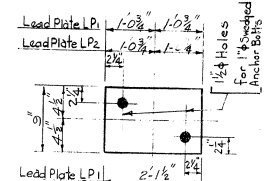
PLAN MASONRY PLATE P2



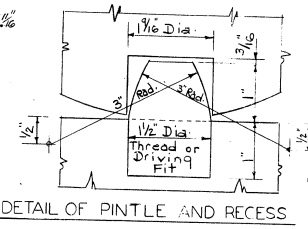
SOLE PLATE S1



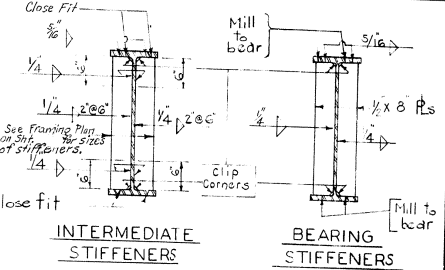
SOLE PLATE S2



LEAD PLATES LPI OR LP2

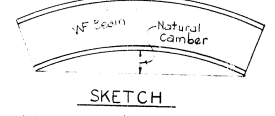


DETAIL OF PINTLE AND RECESS



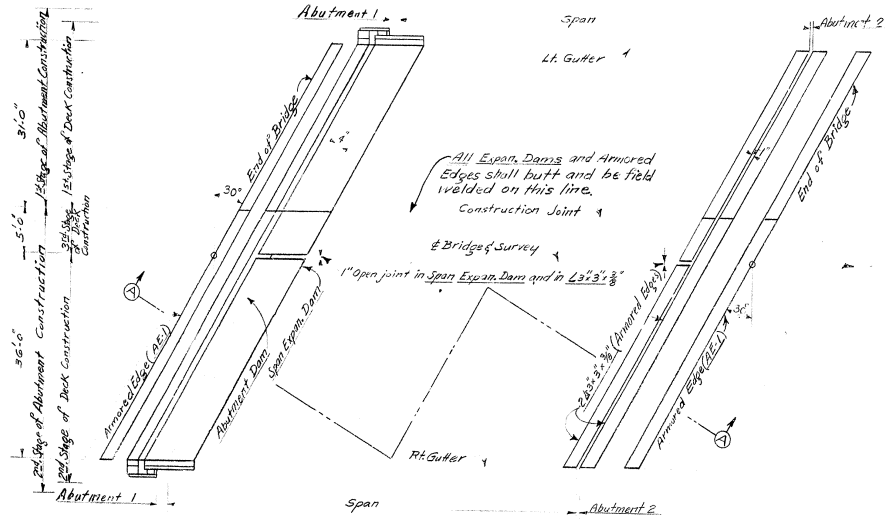
INTERMEDIATE STIFFENERS

BEARING STIFFENERS



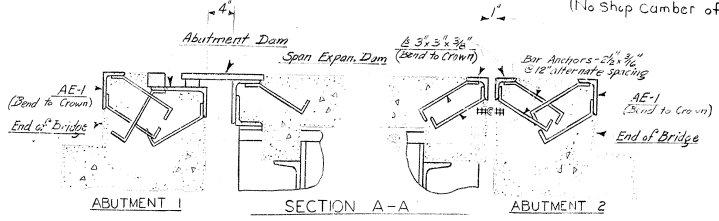
SKETCH

(Use camber of beam up)
(No camber of beams required)



BRIDGE PLAN

Showing Expansion Dams & Armored Edges



ABUTMENT 1

SECTION A-A

ABUTMENT 2

ESTIMATE OF QUANTITIES

| EXP. SHOE ASSEMBLY | FIXED SHOE ASSEMBLY |
|--|----------------------------|
| *Structural Steel 175 Lbs. | *Structural Steel 162 Lbs. |
| *Weights shown include all component parts in one assembly in place, but does not include welds, notional. | |

Bridge over North Ditch

Sheet 16

COMMONWEALTH OF KENTUCKY
DEPARTMENT OF HIGHWAYS
FRANKFORT
COUNTY OF
JEFFERSON
PRESTON STREET
ROAD

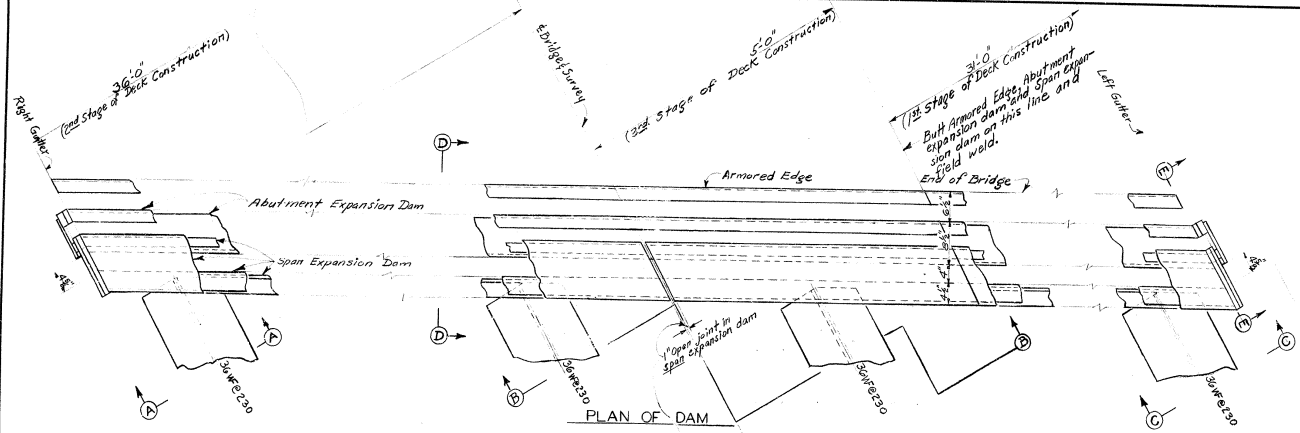
STATION 120+50.966 PROJECT NO. 16050

BRIDGE NUMBER 16050

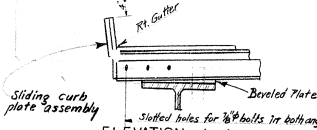
SHOES AND SPAN DETAILS

8-476 (12)

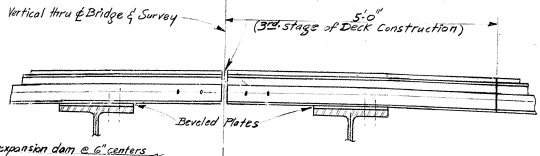
| | | | | |
|------|----|-------|-------|---------|
| DATE | BY | CHK'D | APP'D | REVISED |
| | | | | |



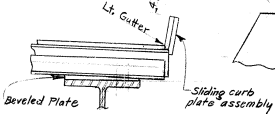
PLAN OF DAM



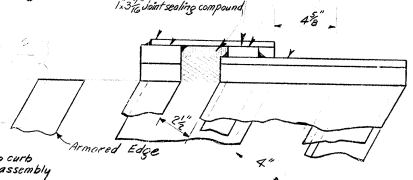
ELEVATION A-A



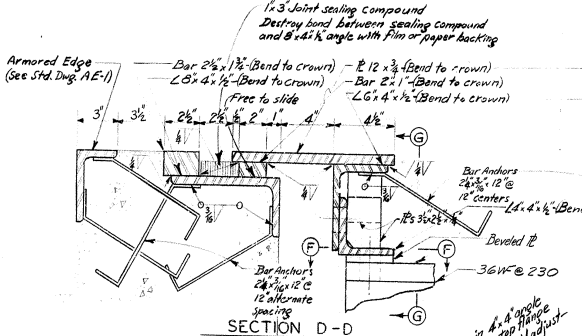
ELEVATION B-B



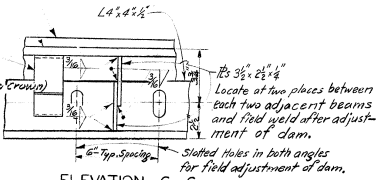
ELEVATION C-C



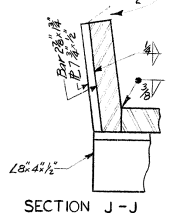
PLAN H-H



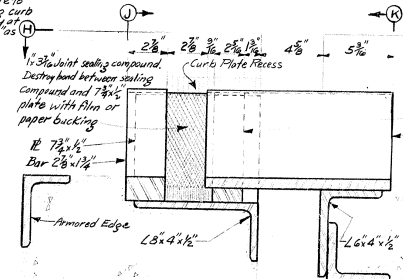
SECTION D-D



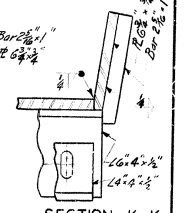
ELEVATION G-G



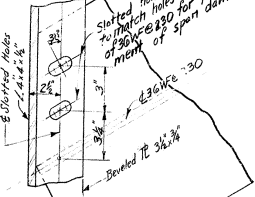
SECTION J-J



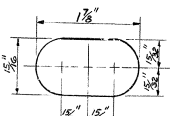
ELEVATION E-E



SECTION K-K



PLAN F-F



SLOTTED HOLE DETAIL
For field adjustment of expansion dam. Typical for all slotted holes

ESTIMATE OF QUANTITIES
 0 Exp. Dam Assemblies 5339 Lbs.
 0 Does not include weld material or Armored Edge Assembly.

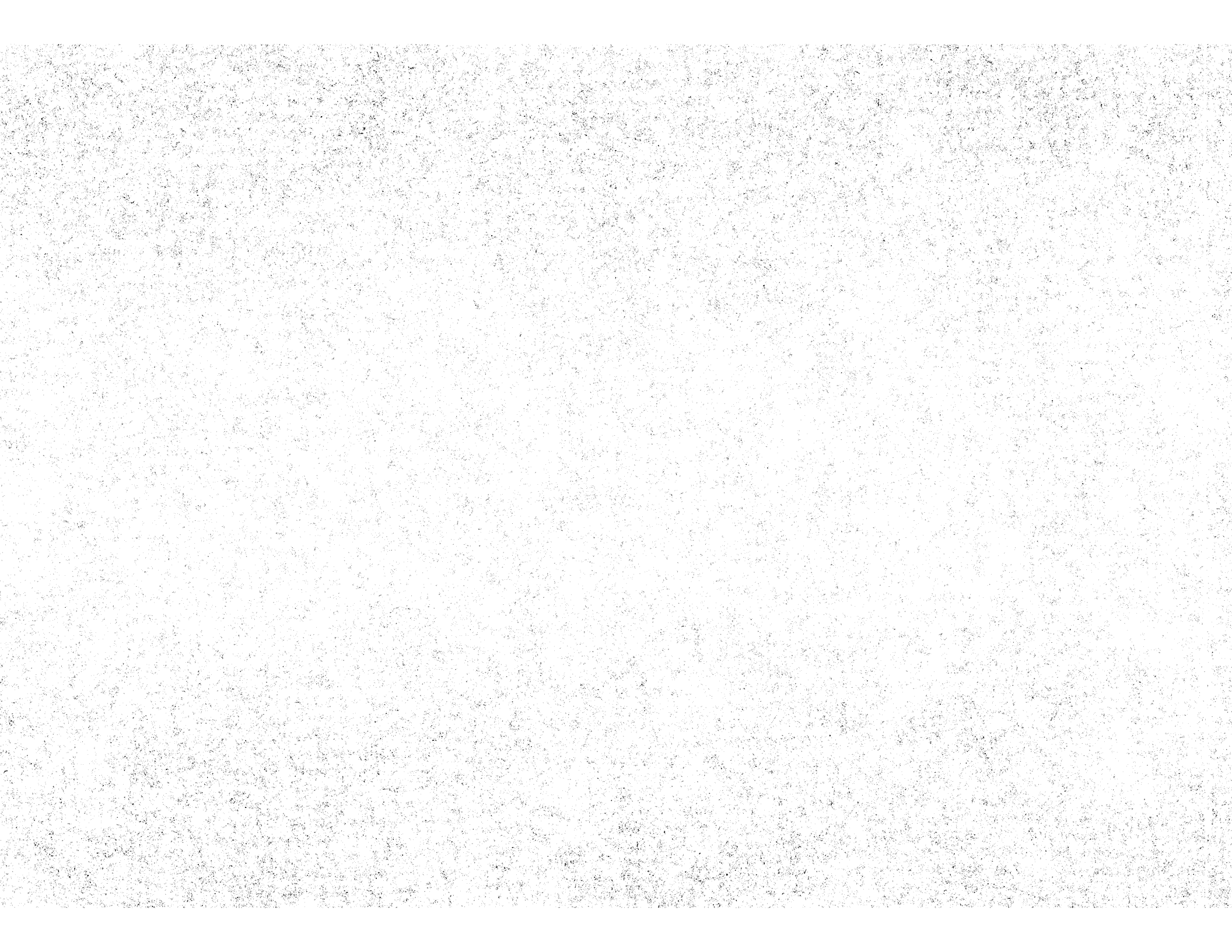
EXPANSION DAM DETAILS

Bridge over North Ditch Sheet 17

COMMONWEALTH OF KENTUCKY
 DEPARTMENT OF HIGHWAYS
 FRANKFORT
 COUNTY OF
 JEFFERSON
 PRESTON STREET
 ROAD

STATION 120+50.926 PROJECT NO. 160.50
 BRIDGE NUMBER DRAWING NO. 160.50
 SHEET NO. 17

DESIGNED BY: [Name] CHECKED BY: [Name] DATE: [Date]
 DRAWN BY: [Name] DATE: [Date]
 APPROVED BY: [Name] DATE: [Date]



DATE

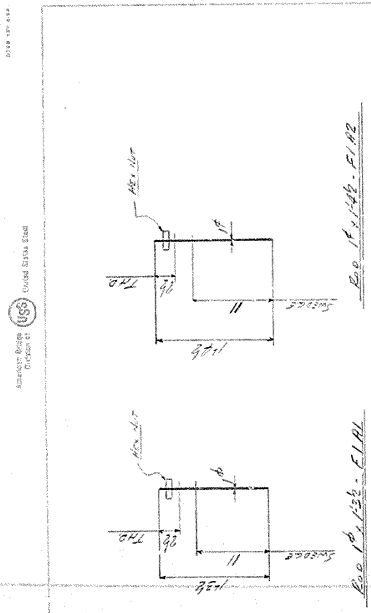
DRAWN
CHECKED
RECOMMENDED

AMERICAN BRIDGE

IN CHARGE OF
ORDER No. E-0240
SHEET No. EF 2

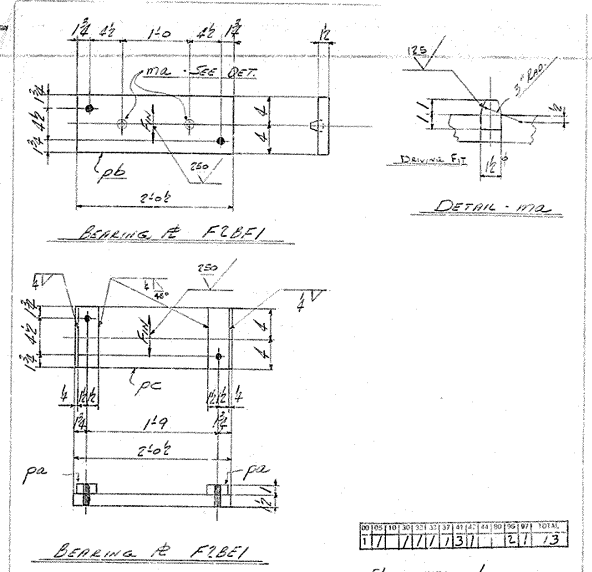
| NO. OF PIERS | SPAN FOOT | BARS PER PIER | BARS PER PIER | | CONCRETE CUBIC YARDS | STEEL TONS | REINFORCING STEEL TONS | TOTAL WEIGHT TONS | MATERIAL CONNECTED | LOCATION |
|-----------------|--------------|---------------------|---------------------|--------|----------------------------|---------------|------------------------------|-------------------------|-----------------------|---------------|
| | | | TOP | BOTTOM | | | | | | |
| 2 | 200 | 24 | 16 | 16 | 12 | 12 | 12 | 12 | 12 | ADJ. TO BEAMS |
| 2 | 200 | 24 | 16 | 16 | 12 | 12 | 12 | 12 | ADJ. TO BEAMS | |
| 2 | 200 | 24 | 16 | 16 | 12 | 12 | 12 | 12 | EXT. DIAPHS TO BEAMS | |
| 2 | 200 | 24 | 16 | 16 | 12 | 12 | 12 | 12 | EXT. DIAPHS TO U/S | |

FIELD REINFORCING BOLTS
MADE OF STRUCTURE STEEL
ORDER No. E-0240
SHEET No. EF 2



| NO. | SPAN | PIERS | REINFORCING STEEL TONS | CONCRETE CUBIC YARDS | TOTAL WEIGHT TONS |
|-----|------|-------|------------------------|----------------------|-------------------|
| 1 | 200 | 2 | 12 | 12 | 12 |
| 2 | 200 | 2 | 12 | 12 | 12 |
| 3 | 200 | 2 | 12 | 12 | 12 |
| 4 | 200 | 2 | 12 | 12 | 12 |

BRIDGE OVER NORTH DITCH
KENTUCKY HIGHWAY DEPT.
JEFFERSON CO. KENTUCKY
RUEB CONST. CO.



| NO. | SPAN | PIERS | REINFORCING STEEL TONS | CONCRETE CUBIC YARDS | TOTAL WEIGHT TONS |
|-----|------|-------|------------------------|----------------------|-------------------|
| 12 | 200 | 2 | 12 | 12 | 12 |
| 12 | 200 | 2 | 12 | 12 | 12 |

| NO. | SPAN | PIERS | REINFORCING STEEL TONS | CONCRETE CUBIC YARDS | TOTAL WEIGHT TONS |
|-----|------|-------|------------------------|----------------------|-------------------|
| 720 | 200 | 2 | 12 | 12 | 12 |

720 # Lead
500
837-55 (COMMON
DESIGNATION)

KENTUCKY
DEPARTMENT OF HIGHWAYS

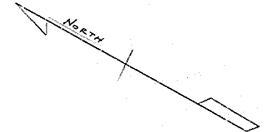
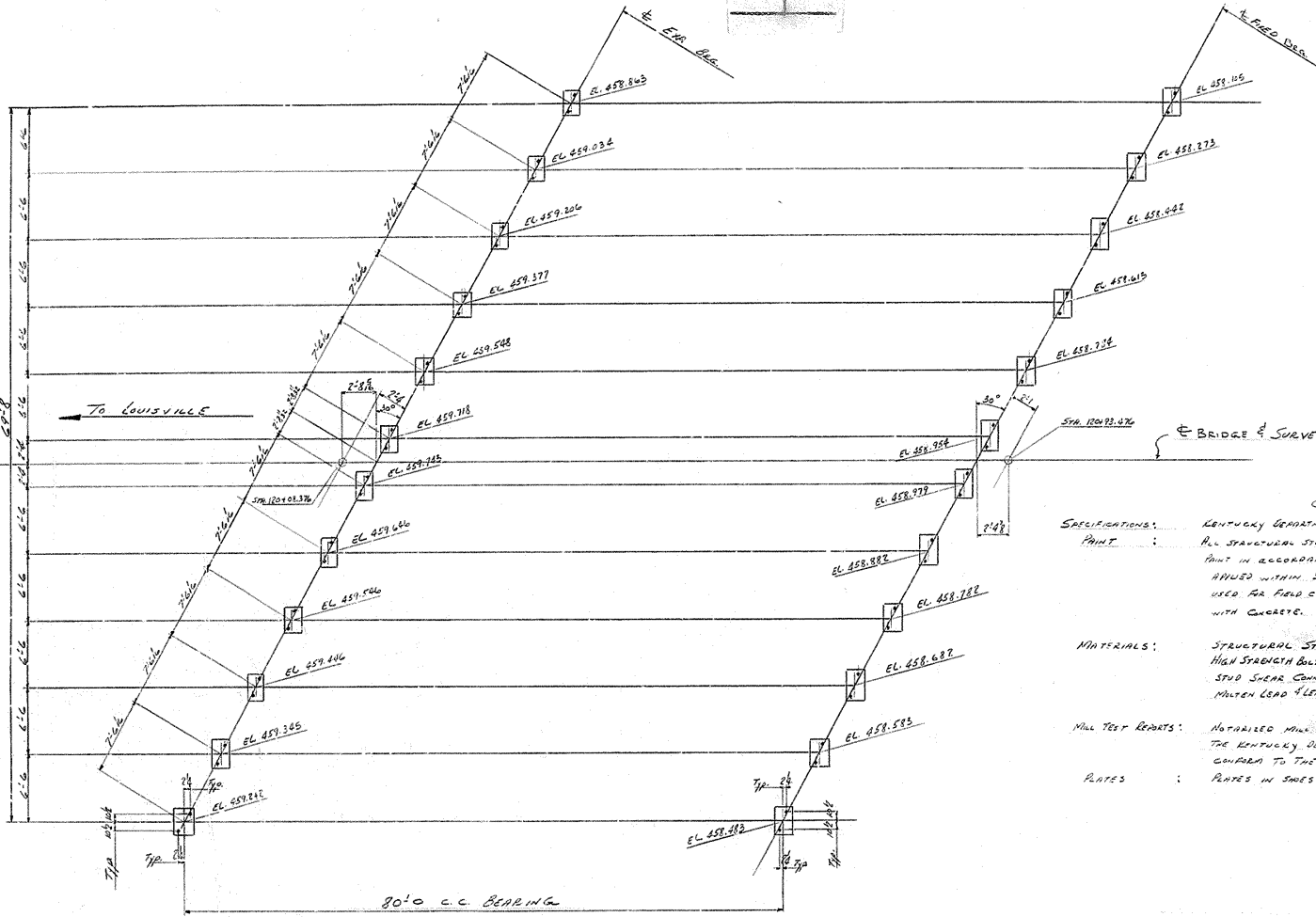
Draw # 16050
Sheet 2

STANDARD DRAWING No. _____

SUBMITTED _____ DIRECTOR DIVISION OF _____ DATE _____

APPROVED _____ STATE HIGHWAY ENGINEER _____ DATE _____

BRIDGE



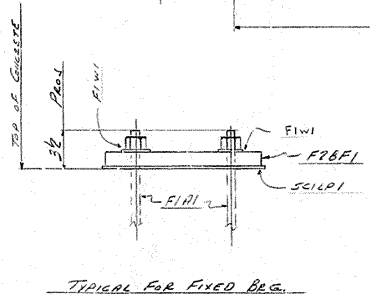
GENERAL NOTE

SPECIFICATIONS: KENTUCKY DEPARTMENT OF HIGHWAYS CURRENT STANDARDS WITH AMENDMENTS
PAINT: ALL STRUCTURAL STEEL SHALL BE GIVEN ONE COAT OF TYPE 1 RED LEAD PAINT IN ACCORDANCE WITH THE SPECIFICATIONS. SHOP PAINT SHALL NOT BE APPLIED WITHIN 3" OF OPEN HOLES, UNLESS HIGH STRENGTH BOLTS ARE TO BE USED FOR FIELD CONNECTIONS AND SHALL NOT BE APPLIED TO STEEL IN CONTACT WITH CONCRETE.

MATERIALS: STRUCTURAL STEEL: A36-65T
 HIGH STRENGTH BOLTS, NUTS AND WASHERS: A325-61T
 SHOP SHEAR CONNECTORS: A108-C8W5
 MILLER LEAD & LEAD RATES: 520-55

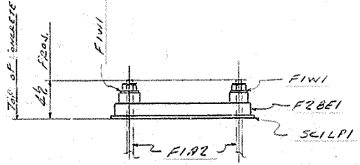
WELD TEST REPORTS: NOTARISED WELD TEST REPORTS IN TRIPLICATE SHALL BE FURNISHED TO THE KENTUCKY DEPARTMENT OF HIGHWAYS SHOWING THAT ALL WELDS CONFORM TO THE SPECIFICATIONS.

RATES: RATES IN SHEETS MUST BE TRUE AND FAIR OF WARD.



TYPICAL FOR FIXED BEG.

ELEVATION IS AS GIVEN TO TOP OF CONCRETE



TYPICAL FOR EXP BEG.

Plan #16050
 Sheet 3
 BRIDGE OVER NORTH DITCH
 KENTUCKY HIGHWAY 607
 LOUISVILLE, (JEFFERSON COUNTY), KY.
 PROJ. SU A78(13) SP 56-138

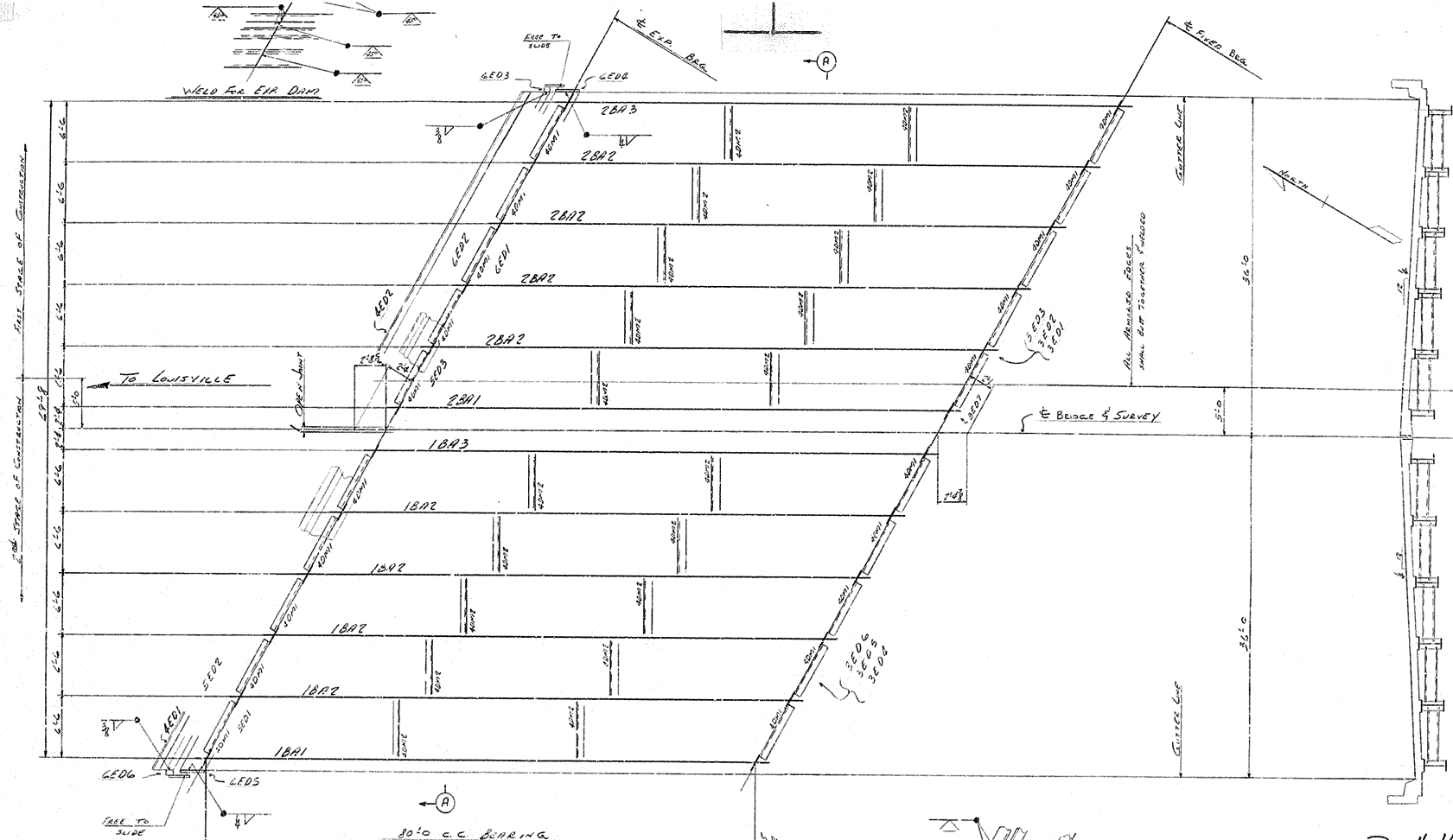
REVISIONS:

| | |
|-----|-------------|
| NO. | DESCRIPTION |
| 1 | AS SHOWN |

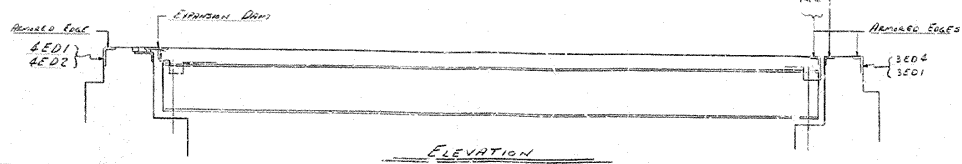
| | | | | | | | | | | | | | | | | | | | | | | | | | | | | | | | | | |
|----|----|----|----|----|----|----|----|----|----|----|----|----|----|----|----|----|----|----|----|----|----|----|----|----|----|----|----|----|----|----|--|--|--|
| 00 | 01 | 02 | 03 | 04 | 05 | 06 | 07 | 08 | 09 | 10 | 11 | 12 | 13 | 14 | 15 | 16 | 17 | 18 | 19 | 20 | 21 | 22 | 23 | 24 | 25 | 26 | 27 | 28 | 29 | 30 | | | |
| | | | | | | | | | | | | | | | | | | | | | | | | | | | | | | | | | |
| | | | | | | | | | | | | | | | | | | | | | | | | | | | | | | | | | |

| | | |
|---|----------|------|
| A | REVISION | DATE |
| B | | |
| C | | |
| D | | |
| E | | |
| F | | |
| G | | |
| H | | |
| I | | |
| J | | |
| K | | |
| L | | |
| M | | |
| N | | |
| O | | |
| P | | |
| Q | | |
| R | | |
| S | | |
| T | | |
| U | | |
| V | | |
| W | | |
| X | | |
| Y | | |
| Z | | |

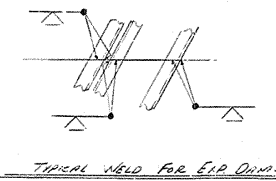
BRIDGE



FRAMING PLAN



ELEVATION



TYPICAL WELD FOR E.P.A. DIMS

TYPICAL FIELD WELD
For 3E01-3E03 & 3F01

SECTION A-A

Dwg # 16050
Sheet 5

BRIDGE OVER NORTH BRANCH
KENTUCKY HIGHWAY DEPT.
LOUISVILLE, (JEFFERSON COUNTY), KY.
PROJ. SU 478(13), SPEG-138

American Bridge Division of U.S. United States Steel

DESIGNER: RANKINE
CHECKER: RANKINE
DATE: 5/20/55
BY: S.C.P.
IN CHARGE: SCOTT

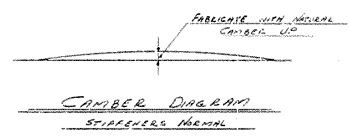
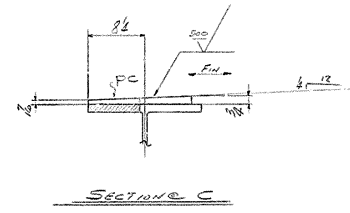
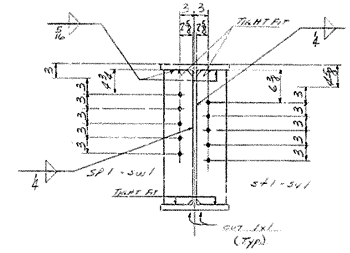
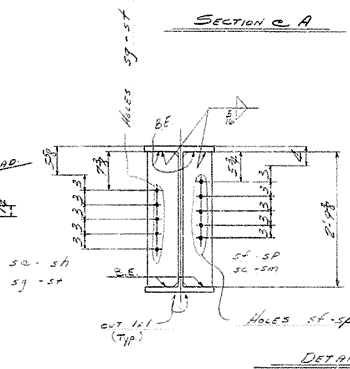
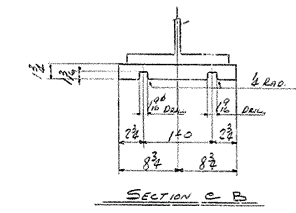
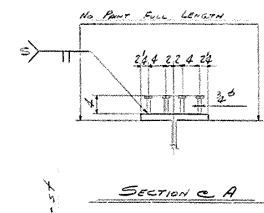
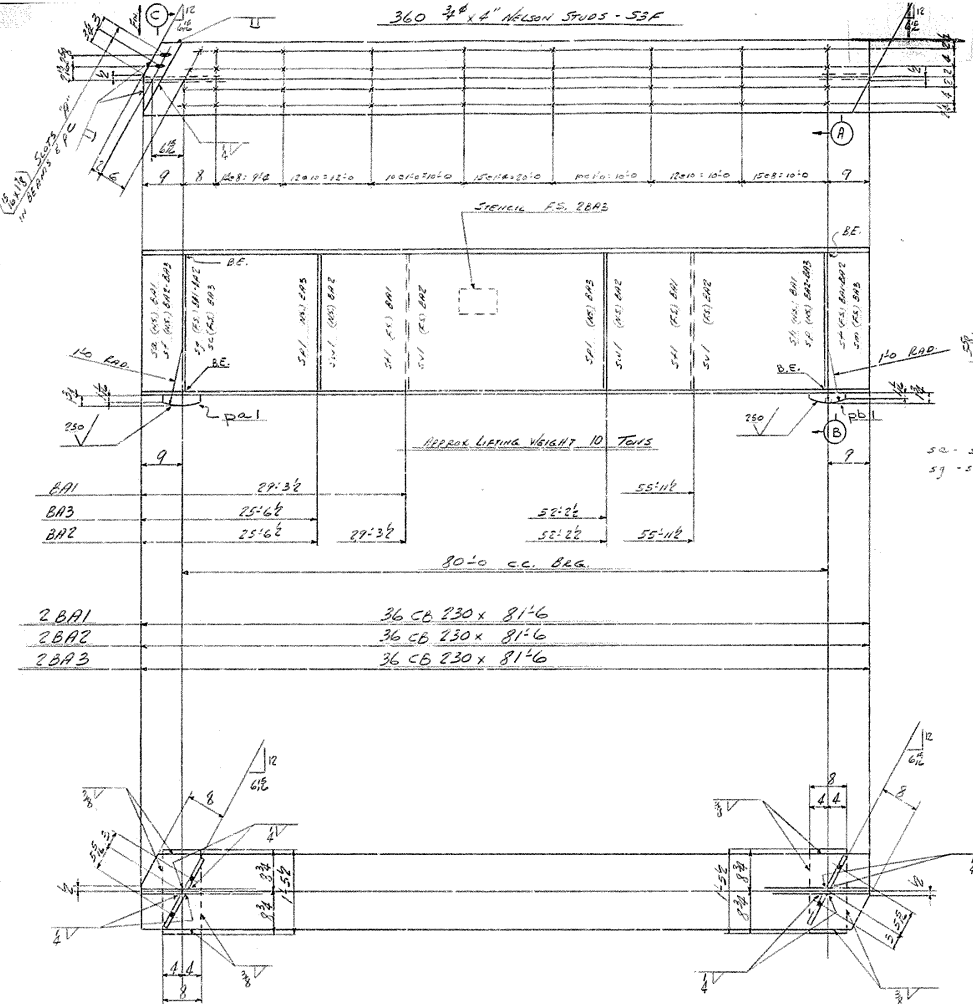
| | | | | | | | | | | | | |
|---|---|---|---|---|---|---|---|---|----|----|----|-------|
| 1 | 2 | 3 | 4 | 5 | 6 | 7 | 8 | 9 | 10 | 11 | 12 | TOTAL |
| | | | | | | | | | | | | 173 |

| | |
|---|--|
| F | |
| E | |
| D | |
| C | |
| B | |
| A | |

ORDER NO. K-0280
REV. NO. E2

BRIDGE

360 3/4" x 4" HELSON STUDS - 53F



SHOP NOTES
 BE DENOTES BEARING END. (PALS TO BEARS)
 SEE GENERAL NOTE ON SHEET E1

Dwg # 16050
 Sheet 7

| NO. | DESCRIPTION | QUANTITY | UNIT | REMARKS |
|-----|------------------|----------|------|---------|
| 1 | 1 CB 36 230 81'6 | 1801 | FT | |
| 2 | 1 CB 36 230 81'6 | 1802 | FT | |
| 3 | 1 CB 36 230 81'6 | 1803 | FT | |
| 4 | 1 CB 36 230 81'6 | 1804 | FT | |
| 5 | 1 CB 36 230 81'6 | 1805 | FT | |
| 6 | 1 CB 36 230 81'6 | 1806 | FT | |
| 7 | 1 CB 36 230 81'6 | 1807 | FT | |
| 8 | 1 CB 36 230 81'6 | 1808 | FT | |
| 9 | 1 CB 36 230 81'6 | 1809 | FT | |
| 10 | 1 CB 36 230 81'6 | 1810 | FT | |
| 11 | 1 CB 36 230 81'6 | 1811 | FT | |
| 12 | 1 CB 36 230 81'6 | 1812 | FT | |
| 13 | 1 CB 36 230 81'6 | 1813 | FT | |
| 14 | 1 CB 36 230 81'6 | 1814 | FT | |
| 15 | 1 CB 36 230 81'6 | 1815 | FT | |
| 16 | 1 CB 36 230 81'6 | 1816 | FT | |
| 17 | 1 CB 36 230 81'6 | 1817 | FT | |
| 18 | 1 CB 36 230 81'6 | 1818 | FT | |
| 19 | 1 CB 36 230 81'6 | 1819 | FT | |
| 20 | 1 CB 36 230 81'6 | 1820 | FT | |

HOLES (1/2" (MIN.))

| | | | | | | | | | |
|----|-------|------|------|----|---|---|---|---|----|
| 1 | 2 | 3 | 4 | 5 | 6 | 7 | 8 | 9 | 10 |
| 12 | 11/17 | 3/11 | 2/17 | 14 | | | | | |

BRIDGE OVER NORTH DITCH
 KENTUCKY HIGHWAY DEPT.
 LOUISVILLE, (JEFFERSON COUNTY), KY.
 PROJ. 50278 (13), SP56-138

PROJECT: **360 3/4" x 4" HELSON STUDS**

DESIGNER: **REYNOLDS**

CHECKED BY: **REYNOLDS**

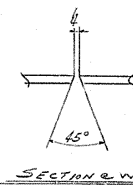
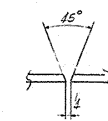
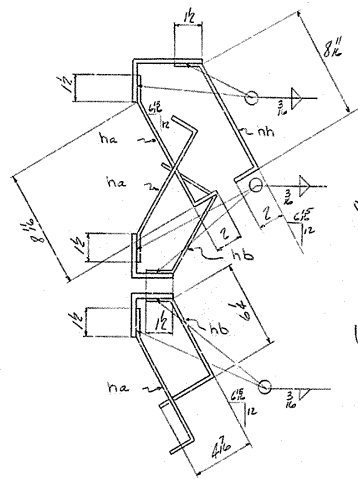
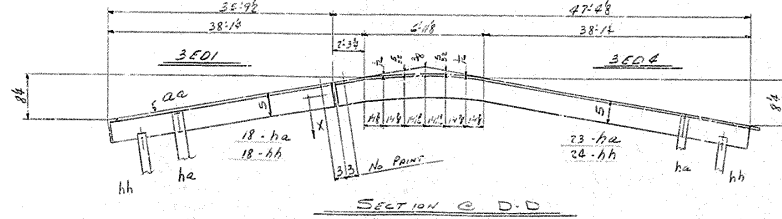
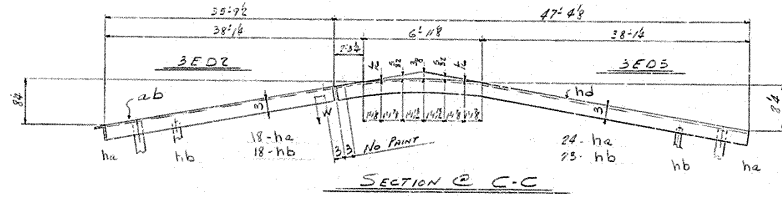
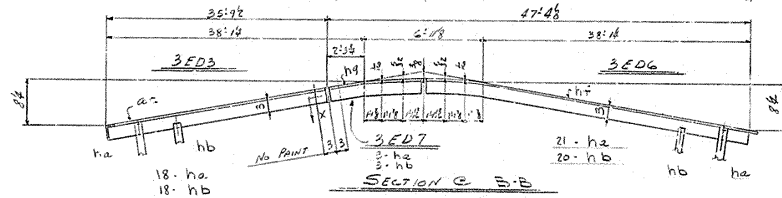
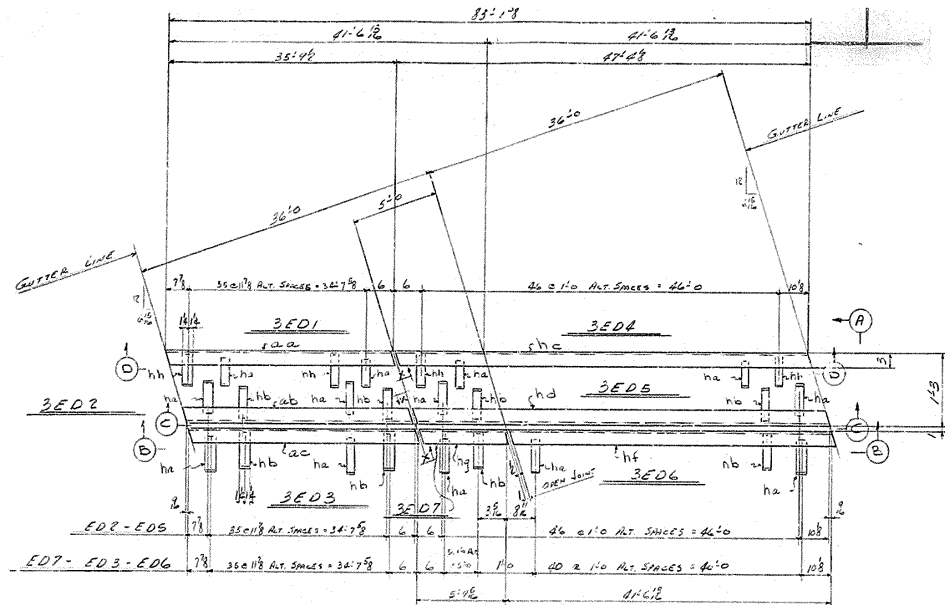
DATE: **2/25/56**

SCALE: **AS SHOWN**

PROJECT NO.: **K-0240**

SHEET NO.: **2**





| LINE NO. | DESCRIPTION | QUANTITY | UNIT | REMARKS | DATE | BY | CHECKED | APP'D |
|----------|-----------------|----------|------|----------------|------|------|---------|-------|
| 1 | | | | | | | | |
| 2 | | | | | | | | |
| 3 | | | | | | | | |
| 4 | EXPANSION JOINT | 3 | ED | 3E01 | | | | |
| 5 | | 1 | L | 5 3 3/8 35 1/2 | | | | |
| 6 | | 18 | FUT | 2 1/2 | 10 | REIN | ha-3 | |
| 7 | | 18 | FUT | 2 1/2 | 10 | REIN | hb-3 | |
| 8 | | | | | | | | |
| 9 | | | | | | | | |
| 10 | EXPANSION JOINT | 3 | ED | 3E02 | | | | |
| 11 | | 1 | L | 5 3 3/8 35 1/2 | | | | |
| 12 | | 18 | FUT | 2 1/2 | 10 | REIN | ha-3 | |
| 13 | | 18 | FUT | 2 1/2 | 10 | REIN | hb-3 | |
| 14 | | | | | | | | |
| 15 | | | | | | | | |
| 16 | EXPANSION JOINT | 3 | ED | 3E03 | | | | |
| 17 | | 1 | L | 5 3 3/8 35 1/2 | | | | |
| 18 | | 18 | FUT | 2 1/2 | 10 | REIN | ha-3 | |
| 19 | | 18 | FUT | 2 1/2 | 10 | REIN | hb-3 | |
| 20 | | | | | | | | |
| 21 | | | | | | | | |
| 22 | | | | | | | | |
| 23 | | | | | | | | |
| 24 | | | | | | | | |
| 25 | | | | | | | | |
| 26 | EXPANSION JOINT | 3 | ED | 3E04 | | | | |
| 27 | | 1 | L | 5 3 3/8 35 1/2 | | | | |
| 28 | | 23 | FUT | 2 1/2 | 10 | REIN | ha-3 | |
| 29 | | 24 | FUT | 2 1/2 | 10 | REIN | hb-3 | |
| 30 | | | | | | | | |
| 31 | | | | | | | | |
| 32 | | | | | | | | |
| 33 | EXPANSION JOINT | 3 | ED | 3E05 | | | | |
| 34 | | 1 | L | 5 3 3/8 35 1/2 | | | | |
| 35 | | 21 | FUT | 2 1/2 | 10 | REIN | ha-3 | |
| 36 | | 23 | FUT | 2 1/2 | 10 | REIN | hb-3 | |
| 37 | | | | | | | | |
| 38 | | | | | | | | |
| 39 | | | | | | | | |
| 40 | | | | | | | | |
| 41 | EXPANSION JOINT | 3 | ED | 3E06 | | | | |
| 42 | | 1 | L | 5 3 3/8 35 1/2 | | | | |
| 43 | | 21 | FUT | 2 1/2 | 10 | REIN | ha-3 | |
| 44 | | 20 | FUT | 2 1/2 | 10 | REIN | hb-3 | |
| 45 | | | | | | | | |
| 46 | | | | | | | | |
| 47 | | | | | | | | |
| 48 | | | | | | | | |
| 49 | | | | | | | | |
| 50 | EXPANSION JOINT | 3 | ED | 3E07 | | | | |
| 51 | | 1 | L | 5 3 3/8 35 1/2 | | | | |
| 52 | | 3 | FUT | 2 1/2 | 10 | REIN | ha-3 | |
| 53 | | 3 | FUT | 2 1/2 | 10 | REIN | hb-3 | |
| 54 | | | | | | | | |
| 55 | | | | | | | | |
| 56 | | | | | | | | |
| 57 | | | | | | | | |
| 58 | | | | | | | | |
| 59 | | | | | | | | |
| 60 | | | | | | | | |
| 61 | | | | | | | | |
| 62 | | | | | | | | |
| 63 | | | | | | | | |
| 64 | | | | | | | | |
| 65 | | | | | | | | |
| 66 | | | | | | | | |
| 67 | | | | | | | | |
| 68 | | | | | | | | |
| 69 | | | | | | | | |
| 70 | | | | | | | | |

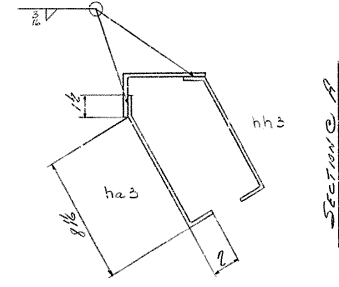
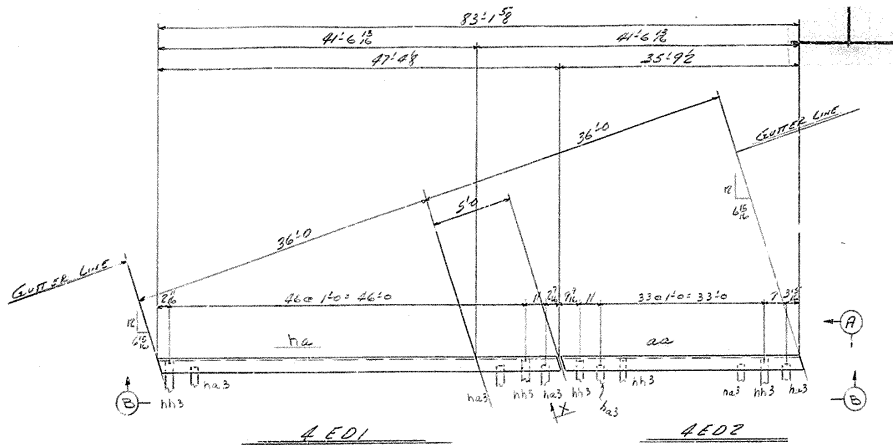
Draw# 16050
 Sheet 8
 REVISION TYPE 1
 YES UN
 NO
 BRIDGE OVER NORTH DITCH
 KENTUCKY HIGHWAY DEPT.
 LOUISVILLE, (JEFFERSON COUNTY), KY
 Proj. 50478 (13), SP56-138

| | | |
|-------------|-------|--------|
| DESIGNER | SCALE | DATE |
| REVISED BY | DATE | REASON |
| APPROVED BY | DATE | REASON |

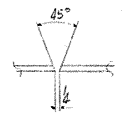
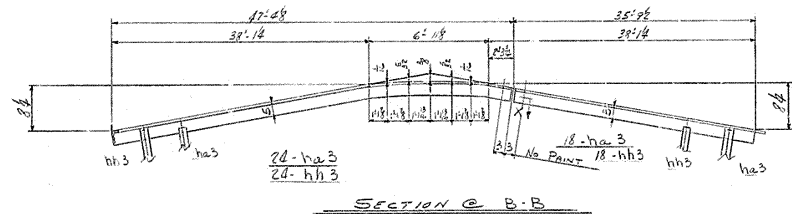
| | | | |
|-----|---------|-----|--------|
| NO. | DATE | BY | REASON |
| 1 | 1/17/71 | 3/7 | 1 |
| 2 | 2/17/73 | | |

BRIDGE
 E-0240
 (Welding)
 3
 84

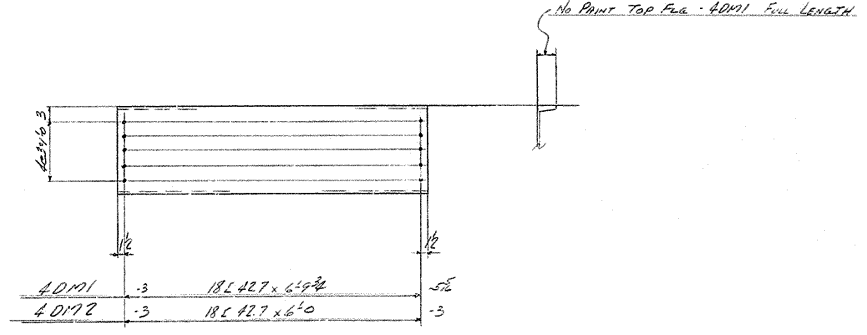
1
 2
 3
 4
 5
 6
 7
 8
 9
 10
 11
 12
 13
 14
 15
 16
 17
 18
 19
 20
 21
 22
 23
 24
 25
 26
 27
 28
 29
 30
 31
 32
 33
 34
 35
 36
 37
 38
 39
 40
 41
 42
 43
 44
 45
 46
 47
 48
 49
 50
 51
 52
 53
 54
 55
 56
 57
 58
 59
 60
 61
 62
 63
 64
 65
 66
 67
 68
 69
 70
 71
 72
 73
 74
 75
 76
 77
 78
 79
 80
 81
 82
 83
 84
 85
 86
 87
 88
 89
 90
 91
 92
 93
 94
 95
 96
 97
 98
 99
 100



SECTION C-A



SECTION C-X



BRIDGE OVER NORTH DITCH
 KENTUCKY HIGHWAY DEPT.
 LOUISVILLE, (JEFFERSON COUNTY), KY
 PROJ. SU 478 (13), SP 56-138

Draw # 16050
 Sheet 9

HOLES 1/16"

| LINE NO. | MATERIAL | QUANTITY | UNIT | REMARKS | DATE | BY | CHECKED | APPROVED | MATERIAL | | QUANTITY | UNIT | REMARKS | DATE | BY | CHECKED | APPROVED |
|----------|----------------|----------|------|---------|------|----|---------|----------|----------|------|----------|------|---------|------|----|---------|----------|
| | | | | | | | | | TYPE | SIZE | | | | | | | |
| 1 | Expansion Bolt | 1 | L | | | | | | 4ED1 | | | | | | | | |
| 2 | Expansion Bolt | 5 | S | | | | | | na3 | | | | | | | | |
| 3 | Expansion Bolt | 18 | FLT | | | | | | hh3 | | | | | | | | |
| 4 | Expansion Bolt | 10 | FLT | | | | | | hh3 | | | | | | | | |
| 5 | Expansion Bolt | 1 | L | | | | | | 4ED2 | | | | | | | | |
| 6 | Expansion Bolt | 5 | S | | | | | | aa | | | | | | | | |
| 7 | Expansion Bolt | 18 | FLT | | | | | | na3 | | | | | | | | |
| 8 | Expansion Bolt | 18 | FLT | | | | | | hh3 | | | | | | | | |
| 9 | Expansion Bolt | 1 | L | | | | | | 4ED1 | | | | | | | | |
| 10 | Expansion Bolt | 5 | S | | | | | | na3 | | | | | | | | |
| 11 | Expansion Bolt | 18 | FLT | | | | | | hh3 | | | | | | | | |
| 12 | Expansion Bolt | 10 | FLT | | | | | | hh3 | | | | | | | | |
| 13 | Expansion Bolt | 1 | L | | | | | | 4ED2 | | | | | | | | |
| 14 | Expansion Bolt | 5 | S | | | | | | aa | | | | | | | | |
| 15 | Expansion Bolt | 18 | FLT | | | | | | na3 | | | | | | | | |
| 16 | Expansion Bolt | 18 | FLT | | | | | | hh3 | | | | | | | | |
| 17 | Expansion Bolt | 1 | L | | | | | | 4ED1 | | | | | | | | |
| 18 | Expansion Bolt | 5 | S | | | | | | na3 | | | | | | | | |
| 19 | Expansion Bolt | 18 | FLT | | | | | | hh3 | | | | | | | | |
| 20 | Expansion Bolt | 10 | FLT | | | | | | hh3 | | | | | | | | |
| 21 | Expansion Bolt | 1 | L | | | | | | 4ED2 | | | | | | | | |
| 22 | Expansion Bolt | 5 | S | | | | | | aa | | | | | | | | |
| 23 | Expansion Bolt | 18 | FLT | | | | | | na3 | | | | | | | | |
| 24 | Expansion Bolt | 18 | FLT | | | | | | hh3 | | | | | | | | |
| 25 | Expansion Bolt | 1 | L | | | | | | 4ED1 | | | | | | | | |
| 26 | Expansion Bolt | 5 | S | | | | | | na3 | | | | | | | | |
| 27 | Expansion Bolt | 18 | FLT | | | | | | hh3 | | | | | | | | |
| 28 | Expansion Bolt | 10 | FLT | | | | | | hh3 | | | | | | | | |
| 29 | Expansion Bolt | 1 | L | | | | | | 4ED2 | | | | | | | | |
| 30 | Expansion Bolt | 5 | S | | | | | | aa | | | | | | | | |
| 31 | Expansion Bolt | 18 | FLT | | | | | | na3 | | | | | | | | |
| 32 | Expansion Bolt | 18 | FLT | | | | | | hh3 | | | | | | | | |
| 33 | Expansion Bolt | 1 | L | | | | | | 4ED1 | | | | | | | | |
| 34 | Expansion Bolt | 5 | S | | | | | | na3 | | | | | | | | |
| 35 | Expansion Bolt | 18 | FLT | | | | | | hh3 | | | | | | | | |
| 36 | Expansion Bolt | 10 | FLT | | | | | | hh3 | | | | | | | | |
| 37 | Expansion Bolt | 1 | L | | | | | | 4ED2 | | | | | | | | |
| 38 | Expansion Bolt | 5 | S | | | | | | aa | | | | | | | | |
| 39 | Expansion Bolt | 18 | FLT | | | | | | na3 | | | | | | | | |
| 40 | Expansion Bolt | 18 | FLT | | | | | | hh3 | | | | | | | | |

BRIDGE OVER NORTH DITCH
 KENTUCKY HIGHWAY DEPT.
 LOUISVILLE, (JEFFERSON COUNTY), KY
 PROJ. SU 478 (13), SP 56-138

RELEASE TYPE 1
 PART: YES, UN.
 SHOP CONTRACT SURFACTS: 1/8"

AMERICAN BRIDGE
 DIVISION OF

 United States Steel

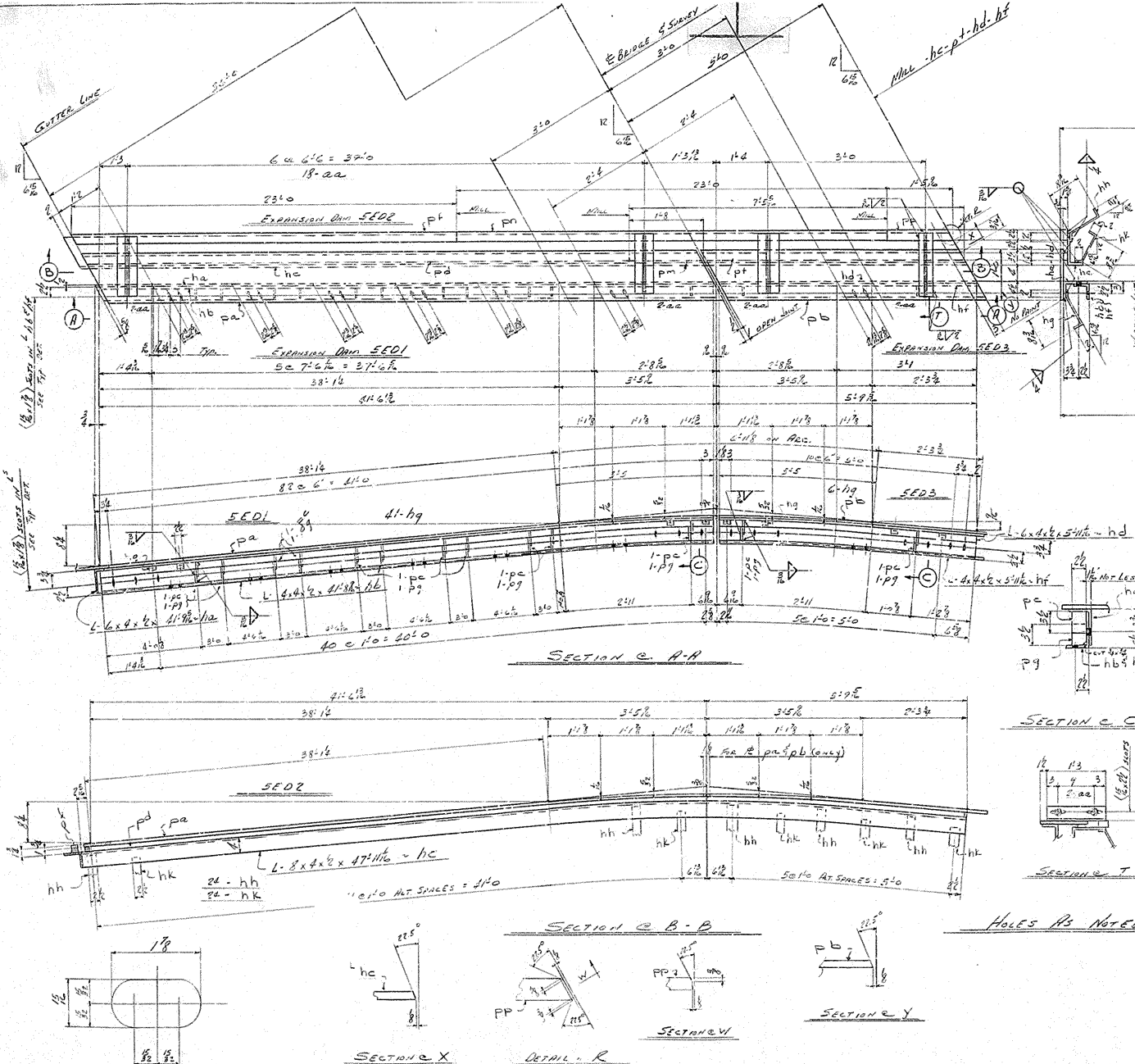
FABRICATION ASSIGNED TO: **EDWARDS**
 CHECKING MADE BY: **EDWARDS**
 MADE BY: **EDWARDS** CHECKED BY: **O.P.** DATE: **2-15-58**
 IN CHARGE OF: **See 27**

FOR LOCATION OF SHOPPING LIST SEE SHEET 8 TO THIS BRIDGE PLAN.
EP
 REV. 1

SHEET NO. **4**
K. ORZCO
 (VIENNA)

BRIDGE

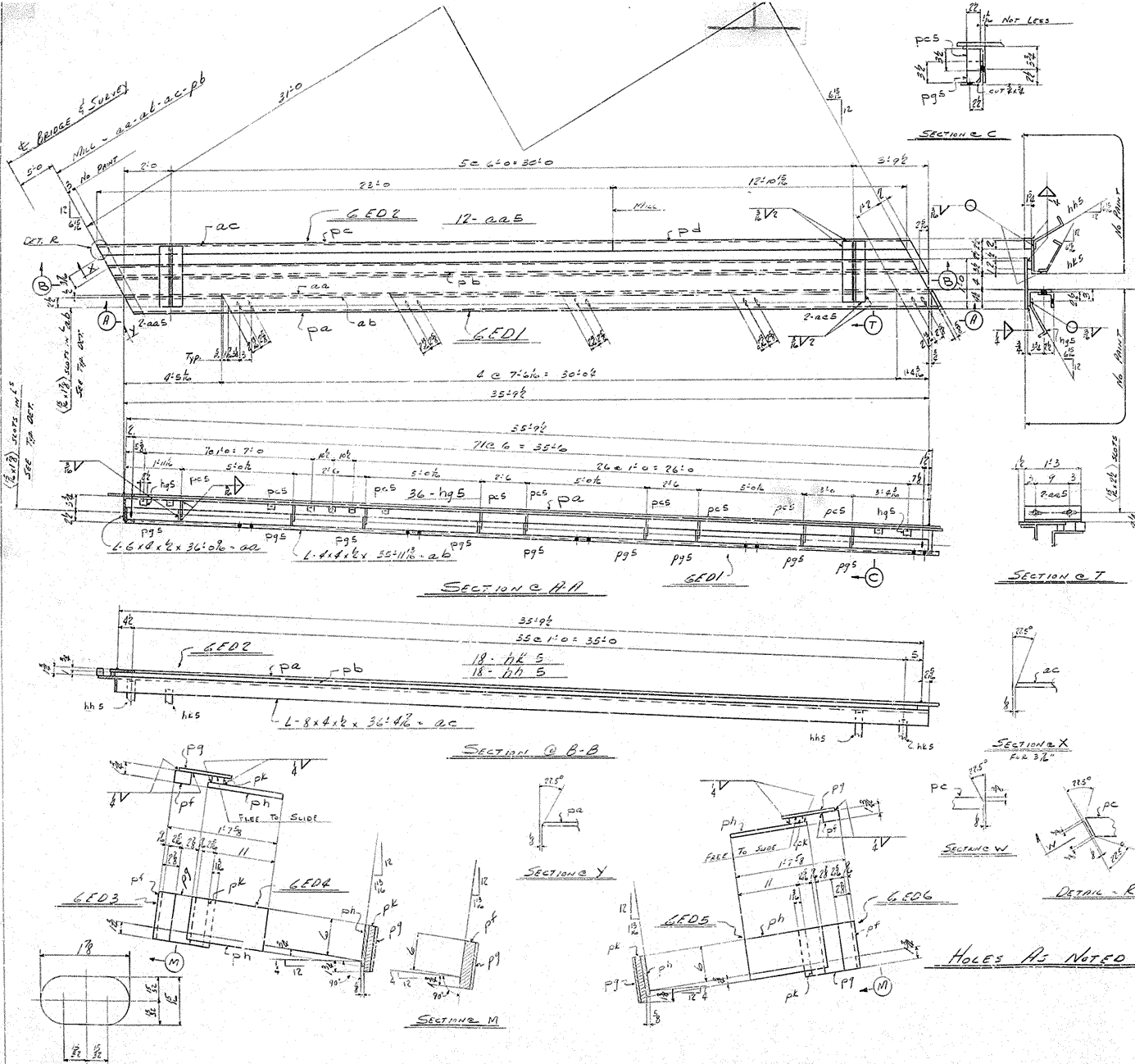
| ITEM NO. | QTY | MATERIAL | SPEC. | PART OR ATTACHMENT | SCALE | APPROX. WEIGHT | APPROX. PRICE | COST | TOTAL COST |
|----------|-----|---------------|-------|--------------------|-------------|----------------|---------------|------|------------|
| | | | | | | | | | |
| 1 | | | | | | | | | |
| 2 | | | | | | | | | |
| 3 | | | | | | | | | |
| 4 | 1 | Expansion Dam | | SE01 | 1/4" x 1/2" | | | | |
| 5 | 1 | L 6 x 6 | 4 | 4 | 1/2" x 1/2" | 1.0 | 1.00 | 1.00 | 1.00 |
| 6 | 1 | L 6 x 6 | 4 | 4 | 1/2" x 1/2" | 1.0 | 1.00 | 1.00 | 1.00 |
| 7 | 1 | PL 12 | 2 | 2 | 1/2" x 1/2" | 1.0 | 1.00 | 1.00 | 1.00 |
| 8 | 1 | PL 12 | 2 | 2 | 1/2" x 1/2" | 1.0 | 1.00 | 1.00 | 1.00 |
| 9 | 1 | PL 12 | 2 | 2 | 1/2" x 1/2" | 1.0 | 1.00 | 1.00 | 1.00 |
| 10 | 1 | PL 12 | 2 | 2 | 1/2" x 1/2" | 1.0 | 1.00 | 1.00 | 1.00 |
| 11 | 1 | PL 12 | 2 | 2 | 1/2" x 1/2" | 1.0 | 1.00 | 1.00 | 1.00 |
| 12 | 1 | PL 12 | 2 | 2 | 1/2" x 1/2" | 1.0 | 1.00 | 1.00 | 1.00 |
| 13 | 1 | PL 12 | 2 | 2 | 1/2" x 1/2" | 1.0 | 1.00 | 1.00 | 1.00 |
| 14 | 1 | PL 12 | 2 | 2 | 1/2" x 1/2" | 1.0 | 1.00 | 1.00 | 1.00 |
| 15 | 1 | PL 12 | 2 | 2 | 1/2" x 1/2" | 1.0 | 1.00 | 1.00 | 1.00 |
| 16 | 1 | Expansion Dam | | SE02 | 1/4" x 1/2" | | | | |
| 17 | 1 | L 6 x 6 | 4 | 4 | 1/2" x 1/2" | 1.0 | 1.00 | 1.00 | 1.00 |
| 18 | 1 | L 6 x 6 | 4 | 4 | 1/2" x 1/2" | 1.0 | 1.00 | 1.00 | 1.00 |
| 19 | 1 | PL 12 | 2 | 2 | 1/2" x 1/2" | 1.0 | 1.00 | 1.00 | 1.00 |
| 20 | 1 | PL 12 | 2 | 2 | 1/2" x 1/2" | 1.0 | 1.00 | 1.00 | 1.00 |
| 21 | 1 | PL 12 | 2 | 2 | 1/2" x 1/2" | 1.0 | 1.00 | 1.00 | 1.00 |
| 22 | 1 | PL 12 | 2 | 2 | 1/2" x 1/2" | 1.0 | 1.00 | 1.00 | 1.00 |
| 23 | 1 | PL 12 | 2 | 2 | 1/2" x 1/2" | 1.0 | 1.00 | 1.00 | 1.00 |
| 24 | 1 | PL 12 | 2 | 2 | 1/2" x 1/2" | 1.0 | 1.00 | 1.00 | 1.00 |
| 25 | 1 | PL 12 | 2 | 2 | 1/2" x 1/2" | 1.0 | 1.00 | 1.00 | 1.00 |
| 26 | 1 | PL 12 | 2 | 2 | 1/2" x 1/2" | 1.0 | 1.00 | 1.00 | 1.00 |
| 27 | 1 | PL 12 | 2 | 2 | 1/2" x 1/2" | 1.0 | 1.00 | 1.00 | 1.00 |
| 28 | 1 | PL 12 | 2 | 2 | 1/2" x 1/2" | 1.0 | 1.00 | 1.00 | 1.00 |
| 29 | 1 | Expansion Dam | | SE03 | 1/4" x 1/2" | | | | |
| 30 | 1 | L 6 x 6 | 4 | 4 | 1/2" x 1/2" | 1.0 | 1.00 | 1.00 | 1.00 |
| 31 | 1 | L 6 x 6 | 4 | 4 | 1/2" x 1/2" | 1.0 | 1.00 | 1.00 | 1.00 |
| 32 | 1 | PL 12 | 2 | 2 | 1/2" x 1/2" | 1.0 | 1.00 | 1.00 | 1.00 |
| 33 | 1 | PL 12 | 2 | 2 | 1/2" x 1/2" | 1.0 | 1.00 | 1.00 | 1.00 |
| 34 | 1 | PL 12 | 2 | 2 | 1/2" x 1/2" | 1.0 | 1.00 | 1.00 | 1.00 |
| 35 | 1 | PL 12 | 2 | 2 | 1/2" x 1/2" | 1.0 | 1.00 | 1.00 | 1.00 |
| 36 | 1 | PL 12 | 2 | 2 | 1/2" x 1/2" | 1.0 | 1.00 | 1.00 | 1.00 |
| 37 | 1 | PL 12 | 2 | 2 | 1/2" x 1/2" | 1.0 | 1.00 | 1.00 | 1.00 |
| 38 | 1 | PL 12 | 2 | 2 | 1/2" x 1/2" | 1.0 | 1.00 | 1.00 | 1.00 |
| 39 | 1 | PL 12 | 2 | 2 | 1/2" x 1/2" | 1.0 | 1.00 | 1.00 | 1.00 |
| 40 | 1 | PL 12 | 2 | 2 | 1/2" x 1/2" | 1.0 | 1.00 | 1.00 | 1.00 |
| 41 | 1 | PL 12 | 2 | 2 | 1/2" x 1/2" | 1.0 | 1.00 | 1.00 | 1.00 |
| 42 | 1 | PL 12 | 2 | 2 | 1/2" x 1/2" | 1.0 | 1.00 | 1.00 | 1.00 |
| 43 | 1 | PL 12 | 2 | 2 | 1/2" x 1/2" | 1.0 | 1.00 | 1.00 | 1.00 |
| 44 | 1 | PL 12 | 2 | 2 | 1/2" x 1/2" | 1.0 | 1.00 | 1.00 | 1.00 |
| 45 | 1 | PL 12 | 2 | 2 | 1/2" x 1/2" | 1.0 | 1.00 | 1.00 | 1.00 |
| 46 | 1 | PL 12 | 2 | 2 | 1/2" x 1/2" | 1.0 | 1.00 | 1.00 | 1.00 |
| 47 | 1 | PL 12 | 2 | 2 | 1/2" x 1/2" | 1.0 | 1.00 | 1.00 | 1.00 |
| 48 | 1 | PL 12 | 2 | 2 | 1/2" x 1/2" | 1.0 | 1.00 | 1.00 | 1.00 |
| 49 | 1 | PL 12 | 2 | 2 | 1/2" x 1/2" | 1.0 | 1.00 | 1.00 | 1.00 |
| 50 | 1 | PL 12 | 2 | 2 | 1/2" x 1/2" | 1.0 | 1.00 | 1.00 | 1.00 |
| 51 | 1 | PL 12 | 2 | 2 | 1/2" x 1/2" | 1.0 | 1.00 | 1.00 | 1.00 |
| 52 | 1 | PL 12 | 2 | 2 | 1/2" x 1/2" | 1.0 | 1.00 | 1.00 | 1.00 |
| 53 | 1 | PL 12 | 2 | 2 | 1/2" x 1/2" | 1.0 | 1.00 | 1.00 | 1.00 |
| 54 | 1 | PL 12 | 2 | 2 | 1/2" x 1/2" | 1.0 | 1.00 | 1.00 | 1.00 |
| 55 | 1 | PL 12 | 2 | 2 | 1/2" x 1/2" | 1.0 | 1.00 | 1.00 | 1.00 |
| 56 | 1 | PL 12 | 2 | 2 | 1/2" x 1/2" | 1.0 | 1.00 | 1.00 | 1.00 |
| 57 | 1 | PL 12 | 2 | 2 | 1/2" x 1/2" | 1.0 | 1.00 | 1.00 | 1.00 |
| 58 | 1 | PL 12 | 2 | 2 | 1/2" x 1/2" | 1.0 | 1.00 | 1.00 | 1.00 |
| 59 | 1 | PL 12 | 2 | 2 | 1/2" x 1/2" | 1.0 | 1.00 | 1.00 | 1.00 |
| 60 | 1 | PL 12 | 2 | 2 | 1/2" x 1/2" | 1.0 | 1.00 | 1.00 | 1.00 |
| 61 | 1 | PL 12 | 2 | 2 | 1/2" x 1/2" | 1.0 | 1.00 | 1.00 | 1.00 |
| 62 | 1 | PL 12 | 2 | 2 | 1/2" x 1/2" | 1.0 | 1.00 | 1.00 | 1.00 |
| 63 | 1 | PL 12 | 2 | 2 | 1/2" x 1/2" | 1.0 | 1.00 | 1.00 | 1.00 |
| 64 | 1 | PL 12 | 2 | 2 | 1/2" x 1/2" | 1.0 | 1.00 | 1.00 | 1.00 |
| 65 | 1 | PL 12 | 2 | 2 | 1/2" x 1/2" | 1.0 | 1.00 | 1.00 | 1.00 |
| 66 | 1 | PL 12 | 2 | 2 | 1/2" x 1/2" | 1.0 | 1.00 | 1.00 | 1.00 |
| 67 | 1 | PL 12 | 2 | 2 | 1/2" x 1/2" | 1.0 | 1.00 | 1.00 | 1.00 |
| 68 | 1 | PL 12 | 2 | 2 | 1/2" x 1/2" | 1.0 | 1.00 | 1.00 | 1.00 |
| 69 | 1 | PL 12 | 2 | 2 | 1/2" x 1/2" | 1.0 | 1.00 | 1.00 | 1.00 |
| 70 | 1 | PL 12 | 2 | 2 | 1/2" x 1/2" | 1.0 | 1.00 | 1.00 | 1.00 |



Proj # 10050
 Sheet 10
 BRIDGE OVER NORTH DITCH
 KENTUCKY HIGHWAY 207
 LOUISVILLE (JEFFERSON COUNTY), KY
 PROJ. SU 478 (13) 5036-198
 RESEND TYPE 1
 Yes (WN)
 HOLES AS NOTED

American Bridge Division of **UNITED STATES STEEL**
 DESIGNED BY **KONNOLE KONNOLE**
 DRAWN BY **CENI**
 CHECKED BY **SCOTT**
 DATE: 8-29
 SCALE: 1/2" = 1'-0"
 (Welding)

BRIDGE
 5



| NO. | QTY | DESCRIPTION | UNIT | REMARKS | NO. | QTY | DESCRIPTION | UNIT | REMARKS |
|-----|-----|-----------------|------|---------|-----|-----|-------------|------|---------|
| 1 | | | | | | | | | |
| 2 | | | | | | | | | |
| 3 | 1 | Expansion Drain | | | | | | | |
| 4 | 1 | L 6 x 6 | 36 | 0.5 | aa | | | | 1/2 |
| 5 | 1 | L 6 x 6 | 36 | 0.5 | ab | | | | 1/2 |
| 6 | 1 | L 6 x 6 | 36 | 0.5 | pa | | | | 1/2 |
| 7 | 2 | L 6 x 6 | 36 | 0.5 | pb | | | | 1/2 |
| 8 | 2 | L 6 x 6 | 36 | 0.5 | pc | | | | 1/2 |
| 9 | 4 | L 6 x 6 | 36 | 0.5 | pd | | | | 1/2 |
| 10 | 3 | L 6 x 6 | 36 | 0.5 | pe | | | | 1/2 |
| 11 | 1 | F 2 | 1 | 35 | 0.5 | pf | | | 1/2 |
| 12 | | | | | | | | | |
| 13 | | | | | | | | | |
| 14 | 2 | L 6 x 6 | 36 | 0.5 | aa | | | | 1/2 |
| 15 | 2 | L 6 x 6 | 36 | 0.5 | ab | | | | 1/2 |
| 16 | 2 | L 6 x 6 | 36 | 0.5 | pa | | | | 1/2 |
| 17 | 2 | L 6 x 6 | 36 | 0.5 | pb | | | | 1/2 |
| 18 | | | | | | | | | |
| 19 | | | | | | | | | |
| 20 | 1 | Expansion Drain | | | | | | | |
| 21 | 1 | L 8 x 6 | 36 | 0.5 | aa | | | | 1/2 |
| 22 | 1 | L 8 x 6 | 36 | 0.5 | ab | | | | 1/2 |
| 23 | 1 | L 8 x 6 | 36 | 0.5 | pa | | | | 1/2 |
| 24 | 1 | L 8 x 6 | 36 | 0.5 | pb | | | | 1/2 |
| 25 | 1 | L 8 x 6 | 36 | 0.5 | pc | | | | 1/2 |
| 26 | | | | | | | | | |
| 27 | | | | | | | | | |
| 28 | | | | | | | | | |
| 29 | | | | | | | | | |
| 30 | | | | | | | | | |
| 31 | | | | | | | | | |
| 32 | | | | | | | | | |
| 33 | | | | | | | | | |
| 34 | | | | | | | | | |
| 35 | 1 | Expansion Drain | | | | | | | |
| 36 | 1 | L 8 x 6 | 36 | 0.5 | aa | | | | 1/2 |
| 37 | 1 | L 8 x 6 | 36 | 0.5 | ab | | | | 1/2 |
| 38 | 1 | L 8 x 6 | 36 | 0.5 | pa | | | | 1/2 |
| 39 | 1 | L 8 x 6 | 36 | 0.5 | pb | | | | 1/2 |
| 40 | | | | | | | | | |
| 41 | | | | | | | | | |
| 42 | | | | | | | | | |
| 43 | 1 | Expansion Drain | | | | | | | |
| 44 | 1 | L 8 x 6 | 36 | 0.5 | aa | | | | 1/2 |
| 45 | 1 | L 8 x 6 | 36 | 0.5 | ab | | | | 1/2 |
| 46 | | | | | | | | | |
| 47 | | | | | | | | | |
| 48 | | | | | | | | | |
| 49 | 1 | Expansion Drain | | | | | | | |
| 50 | 1 | L 8 x 6 | 36 | 0.5 | aa | | | | 1/2 |
| 51 | 1 | L 8 x 6 | 36 | 0.5 | ab | | | | 1/2 |
| 52 | | | | | | | | | |
| 53 | | | | | | | | | |
| 54 | | | | | | | | | |
| 55 | 1 | Expansion Drain | | | | | | | |
| 56 | 1 | L 8 x 6 | 36 | 0.5 | aa | | | | 1/2 |
| 57 | 1 | L 8 x 6 | 36 | 0.5 | ab | | | | 1/2 |
| 58 | | | | | | | | | |
| 59 | | | | | | | | | |
| 60 | | | | | | | | | |
| 61 | | | | | | | | | |
| 62 | | | | | | | | | |
| 63 | | | | | | | | | |
| 64 | | | | | | | | | |
| 65 | | | | | | | | | |
| 66 | | | | | | | | | |
| 67 | | | | | | | | | |
| 68 | | | | | | | | | |
| 69 | | | | | | | | | |
| 70 | | | | | | | | | |

Sheet 11

BRIDGE OVER NORTH DITCH
KENTUCKY HIGHWAY 2007
LOUISVILLE (JEFFERSON COUNTY), KY
Proj. S0478 (13) SP56-138

AMERICAN BRIDGE DIVISION OF UNITED STATES STEEL

DESIGNED BY: R. B. BARNHART
CHECKED BY: R. B. BARNHART
DATE: 11/15/56
BY: SCOTT

SCALE: AS SHOWN

DATE: 11/15/56

NO. 1-2 (WELDED)

| | | | | | | | | | | | | | | | | | | | | |
|---|---|---|---|---|---|---|---|---|----|----|----|----|----|----|----|----|----|----|----|-------|
| 1 | 2 | 3 | 4 | 5 | 6 | 7 | 8 | 9 | 10 | 11 | 12 | 13 | 14 | 15 | 16 | 17 | 18 | 19 | 20 | TOTAL |
| 1 | 1 | 1 | 1 | 1 | 1 | 1 | 1 | 1 | 1 | 1 | 1 | 1 | 1 | 1 | 1 | 1 | 1 | 1 | 1 | 1 |

